

**NATIONAL COUNCIL**  
FOR BEHAVIORAL HEALTH

# **Addressing the Social Determinants of Health: COVID-19 Impacts and Responses**

**Wednesday, March 18, 2020**  
2:00-3:00pm ET



**COE**

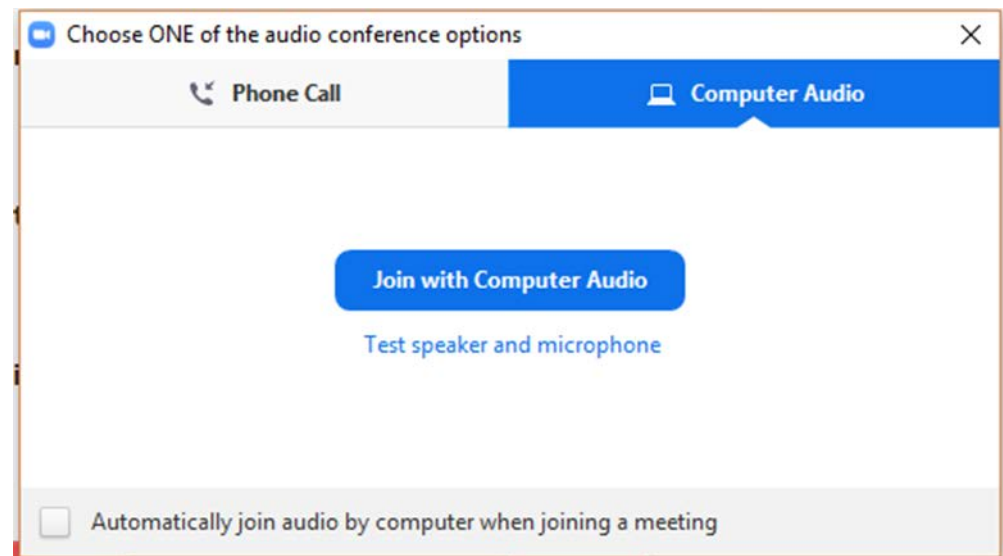
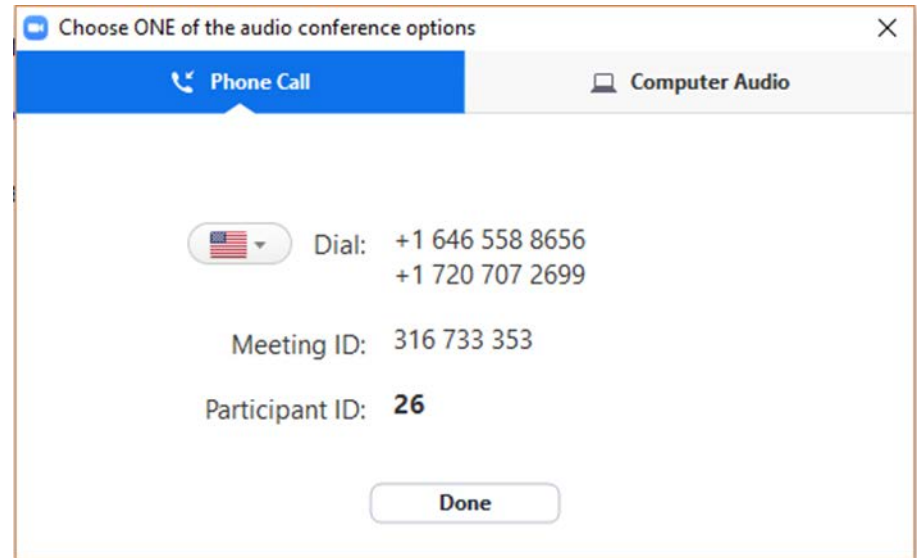
Center of Excellence for Integrated Health Solutions

Funded by Substance Abuse and Mental Health Services Administration

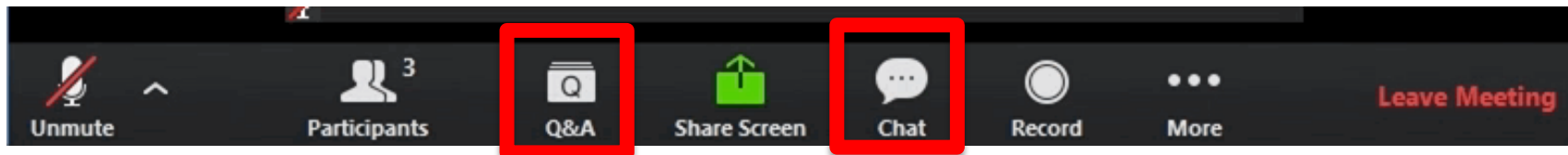
Operated by the National Council for Behavioral Health

# Audio Logistics

- Call in on your telephone, or use your computer audio option
- If you are on the phone, remember to enter your Audio PIN



# How to Ask a Question/Make a Comment



Type in a **question** in the **Q&A box**  
Type in a **comment** in the **chat box**

Both are located at the bottom of your screen.  
We'll answer as many questions as we can at the end of the presentation.

# Disclaimer

The views, opinions, and content expressed in this presentation do not necessarily reflect the views, opinions, or policies of the Center for Mental Health Services (CMHS), the Substance Abuse and Mental Health Services Administration (SAMHSA), or the U.S. Department of Health and Human Services (HHS).

***SAMHSA***

Substance Abuse and Mental Health  
Services Administration

[www.samhsa.gov](http://www.samhsa.gov)

# Poll #1: What best describes your role?

- Clinician
- Administrator
- Policy Maker
- Payer
- Other (specify in chat box)

## **Poll #2: What best describes your organization? (check all that apply)**

- Behavioral Health Provider
- Primary Care Provider
- Mental Health Provider
- Substance Abuse Provider
- Other (specify in chat box)

# Introductions



**Lori Raney, MD**  
Principle, Health Management  
Associates



**Caitlin Thomas-Henkel, MSW**  
Senior Consultant, Health Management  
Associates



# Objectives

**By the end of this webinar, you will be able to:**

- Understand the language of describing the social “determinants” of health (SDOH) and why this distinction matters.
- List 5 categories of SDOH and their key characteristics.
- Recognize commonly used tools to screen for SDOH.
- Understand the importance and identify roles of team members.
- Understand the impact of COVID-19 on SDOH.



# Social “Determinants” of Health – Terminology?

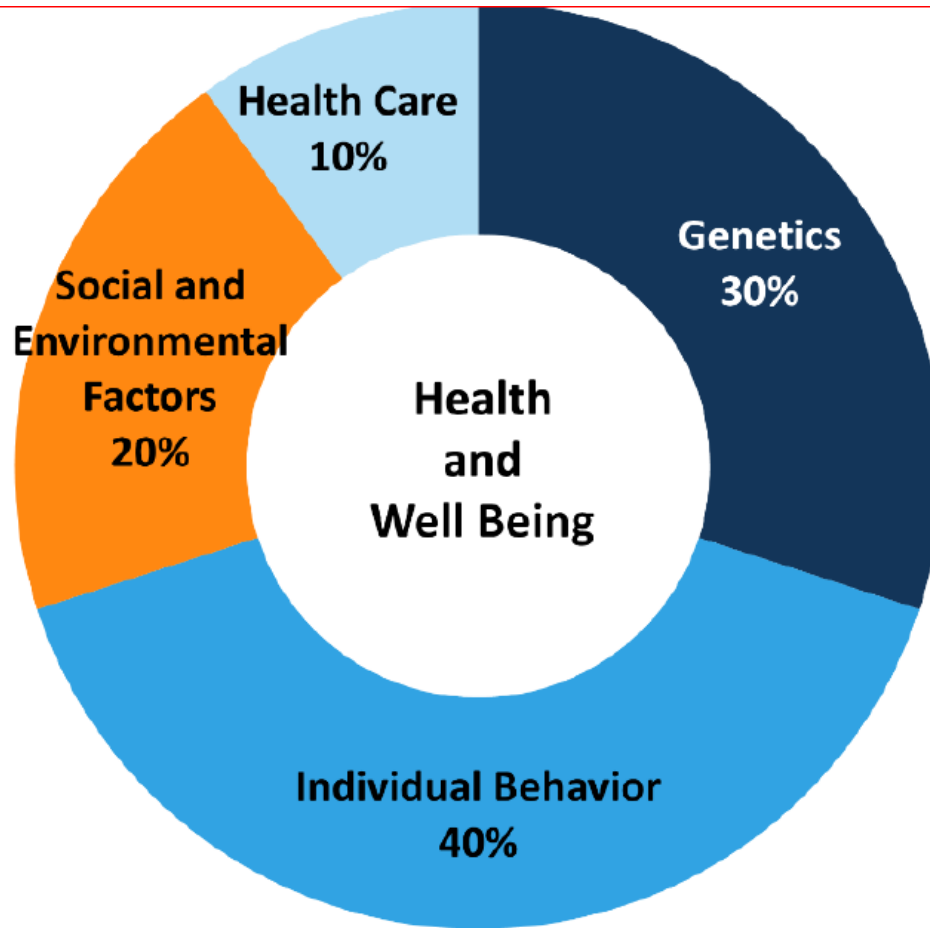
- Definitions and changing language:

*“...while the factors and conditions considered here are referred to as “social determinants,” they may be more aptly discussed as “influencers” or “predictors” rather than direct determinants of an individual’s or community’s health status. Most of these conditions are highly correlated with one’s health but not necessarily causal; further, all SDOH (except race) can change throughout one’s life.”*

*Definition received from*

<https://www.americanactionforum.org/research/understanding-the-social-determinants-of-health/>

# Overall Health is Based on Several Key Factors



40 % of individual health outcomes based on SDOH

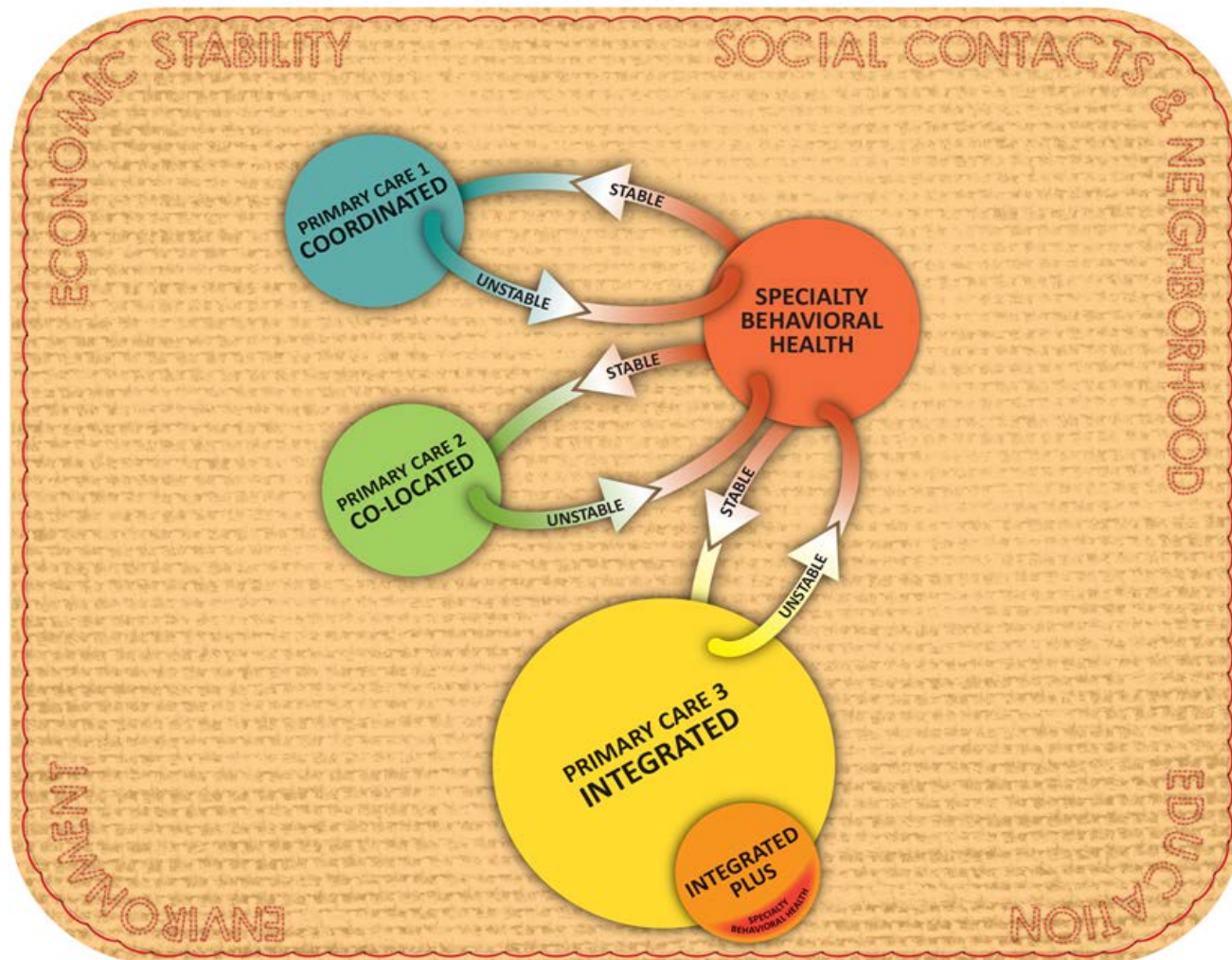
Source: Kaiser Family Foundation. (November 2015). Beyond Health Care: The Role of Social Determinants in Promoting Health and Health Equity. <http://www.kff.org/disparities-policy/issue-brief/beyond-health-care-the-role-of-social-determinants-in-promoting-health-and-health-equity/>

# Social “Predictors” Are the Basic Fabric of Health – Interwoven Part of Our Lives

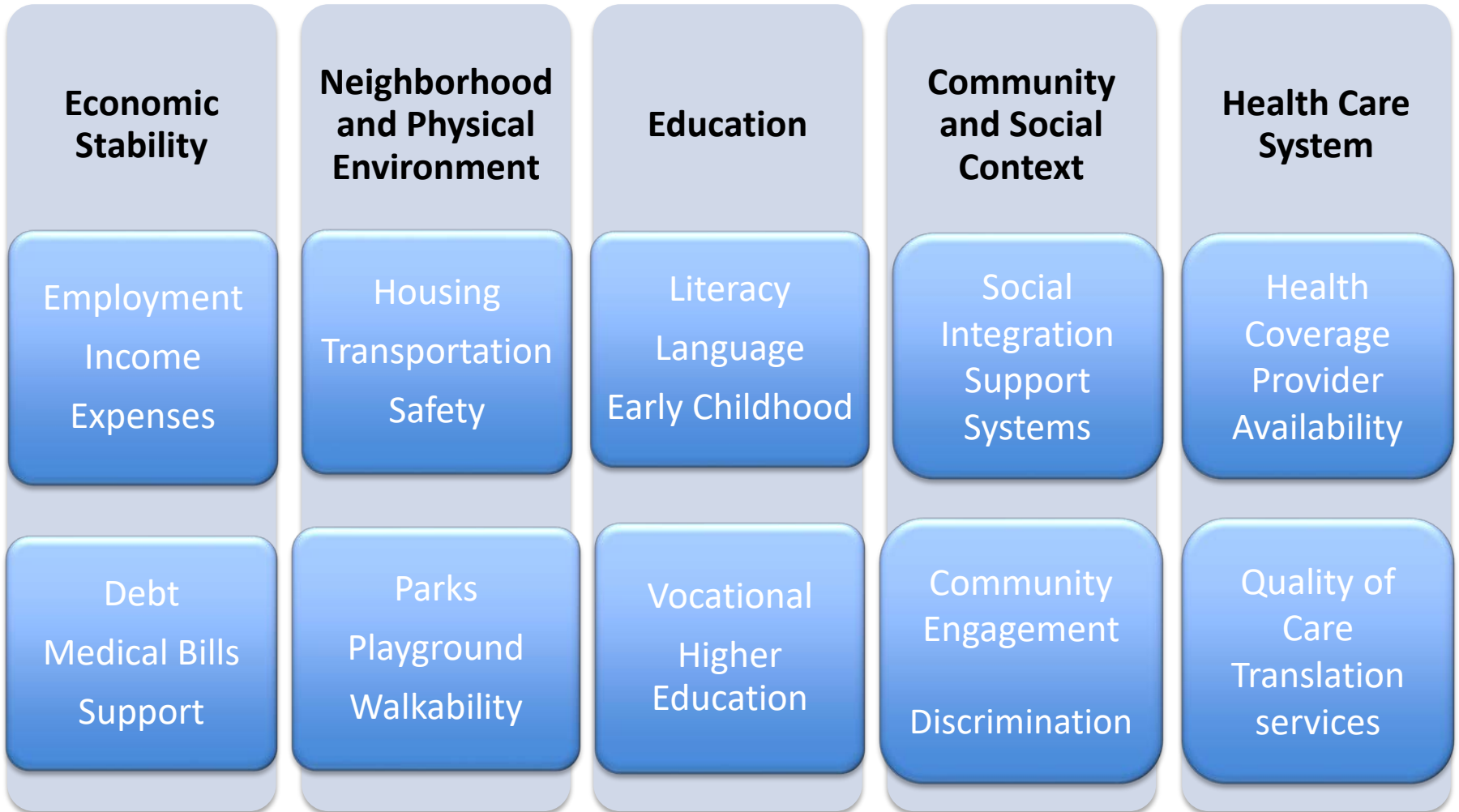


© LORI RANEY MD

# Access to Primary Care and Specialty Behavioral Health: "3 Way" Integration



# Social Determinants of Health Categories (5)



## **Poll #3: Which of the following are you hearing from your clinic are important to address with the COVID-19 outbreak?**

- Economic stability
- Neighborhood and Physical Environment
- Education
- Community and Social Context
- Access to the Health Care System
- Other (please specify in chat box)

# Key Program Considerations

- Selection of screening tools
- Collection of patient level information
- Creating workflows to track and address needs
- Identifying social service resources in your community and TRACKING referrals

# Considerations When Choosing Screening Tools



Capacity to address specific needs




Availability of local resources



Ease of completing tool in clinical assessing



Ability of the tool to capture specific needs that the organization can address

 AMERICAN ACADEMY OF FAMILY PHYSICIANS

## Social Needs Screening Tool

---

**PATIENT FORM (short version)**

Please answer the following:

**HOUSING**

1. What is your housing situation today?

- I do not have housing (I am staying with others, in a hotel, in a shelter, living outside on the street, on a beach, in a car, abandoned building, bus or train station, or in a park)
- I have housing today, but I am worried about losing housing in the future
- I have housing

2. Think about the place you live. Do you have problems with any of the following? (check all that apply)

- Bug infestation
- Mold
- Lead paint or pipes
- Inadequate heat
- Oven or stove not working
- No or not working smoke detectors
- Water leaks
- None of the above

**FOOD**

3. Within the past 12 months, you worried that your food would run out before you get money to buy more?

- Often true
- Sometimes true
- Never true

4. Within the past 12 months, the food you bought just didn't last and you didn't have money to get more?

- Often true
- Sometimes true
- Never true

**TRANSPORTATION**

5. In the past 12 months, has lack of transportation kept you from medical appointments, meetings, work or from getting things needed for daily living? (check all that apply?)

- Yes, it has kept me from medical appointments or getting medications
- Yes, it has kept me from non-medical meetings, appointments, work, or getting things that I need
- No

**UTILITIES**

6. In the past 12 months has the electric, gas, oil, or water company threatened to shut off services in your home?

- Yes
- No
- Already shut off

**PERSONAL SAFETY**

7. How often does anyone, including family, physically hurt you?

- Never
- Rarely
- Sometimes
- Fairly often
- Frequently

8. How often does anyone, including family, insult or talk down to you?

- Never
- Rarely
- Sometimes
- Fairly often
- Frequently

9. How often does anyone, including family, threaten you with harm?

- Never
- Rarely
- Sometimes
- Fairly often
- Frequently

10. How often does anyone, including family, scowm or curse at you?

- Never
- Rarely
- Sometimes
- Fairly often
- Frequently

**ASSISTANCE**

11. Would you like help with any of these needs?


- Yes
- No

Questions 1-10 are reprinted with permission from the National Academy of Sciences, courtesy of the National Academies Press, Washington, D.C.

**REFERENCE:**

1. Billoux A, Varlander K, Anthony S, and Alley D. National Academy of Medicine. Standardized screening for health-related social needs in clinical settings: the accountable health communities screening tool. National Academies Press, Washington, D.C. <https://nam.edu/wp-content/uploads/2017/06/Standardized-Screening-Tool-Health-Related-Social-Needs-in-Clinical-Settings.pdf>. Accessed November 14, 2017.

The EveryONE Project  
Advancing health equity in every community



[https://files.ama-ihmi.org/image/authenticated/s--O2FKZ6\\_3--/SDOH-Complex-Care-Screening-Brief-102617\\_y4zhka\\_xofpjl.pdf](https://files.ama-ihmi.org/image/authenticated/s--O2FKZ6_3--/SDOH-Complex-Care-Screening-Brief-102617_y4zhka_xofpjl.pdf)



# Common Screening Tools

- Protocol for Assessing Patients Assets, Risks and Experiences: PRAPARE Tool
- CMMI Accountable Health Communities of Health (AHC) Screening Tool
- American Academy of Family Physicians
- Health Leads

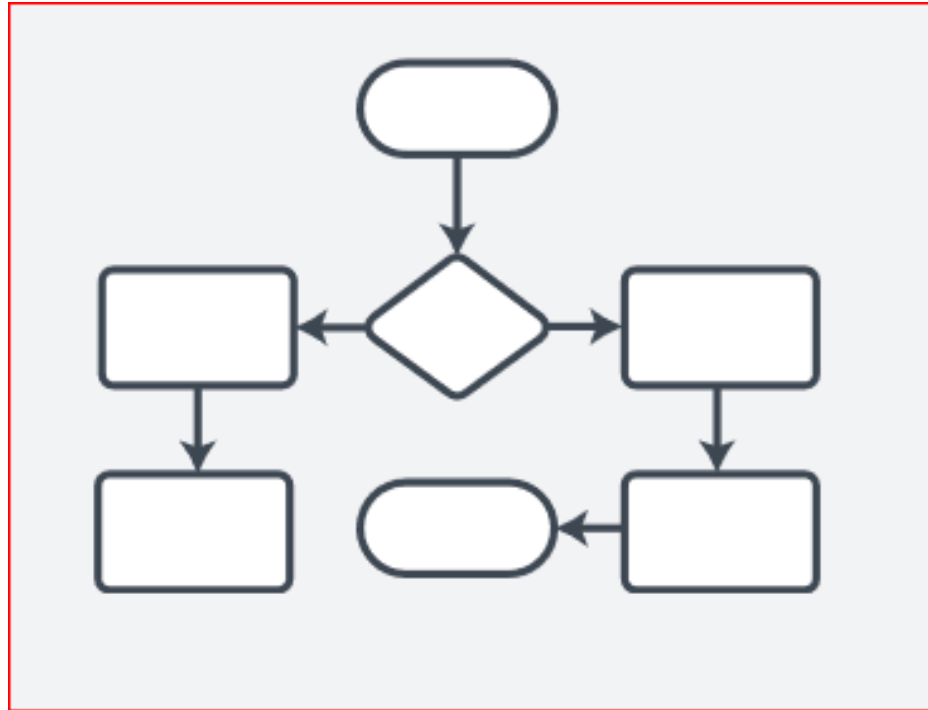
## Social Determinants of Health Assessment Tools

Many of the sites participating in *Transforming Complex Care* adapted existing or created new assessment tools in order to better capture patients' social needs and barriers to care. Examples of these screening tools are available to download below:

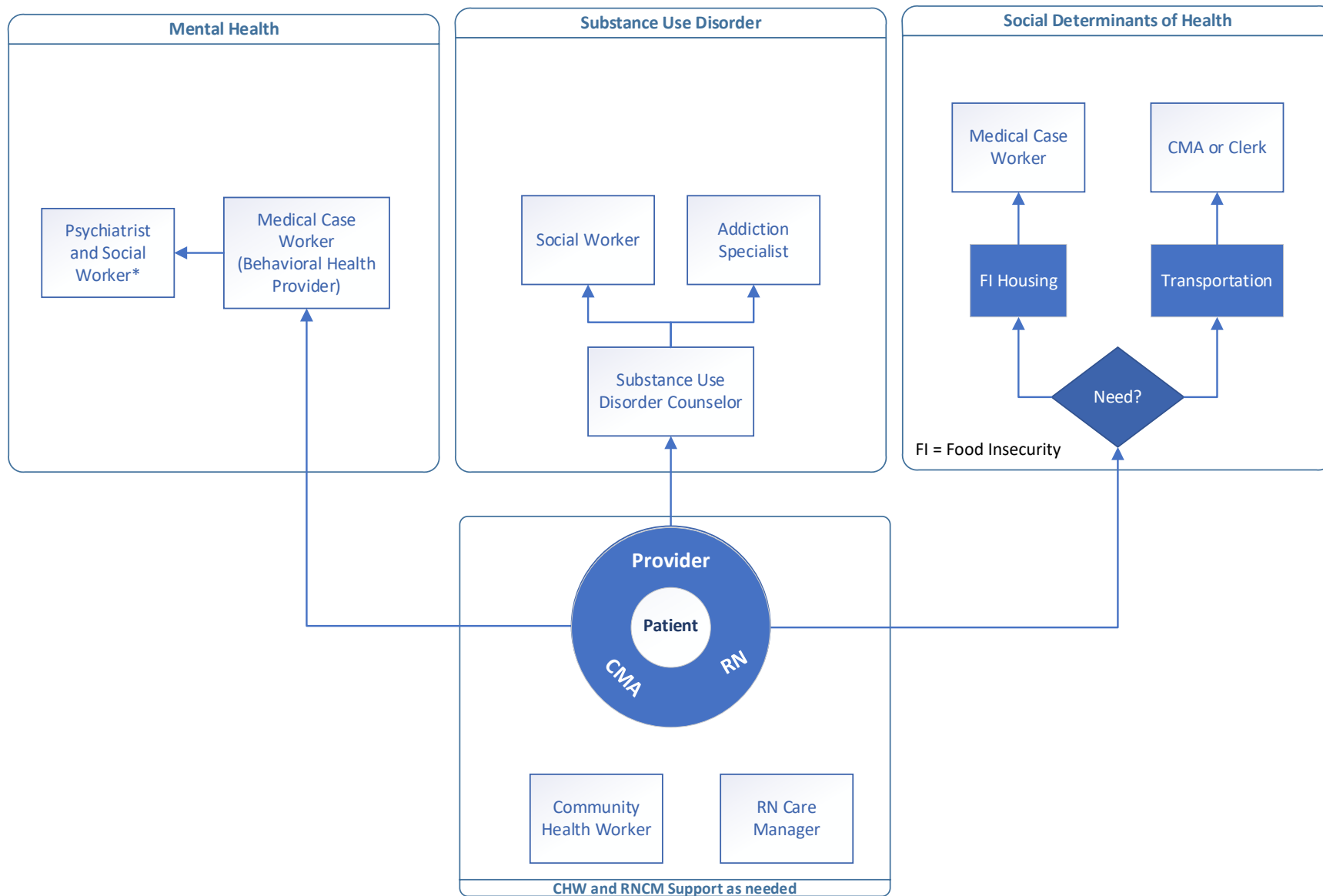
- [Social Determinants Screening Tool \(AccessHealth Spartanburg\)](#)
- [Self-Sufficiency Outcomes Matrix \(OneCare Vermont\)](#)
- [PRAPARE Tool \(Redwood Community Health Coalition\)](#)
- [Community Paramedicine Pilot Health Assessment \(ThedaCare\)](#)
- [Social Needs Assessment \(Virginia Commonwealth University Health System\)](#)

# Workflows

- Clear roles and responsibilities
  - Who will screen?
  - Who will record?
  - Who will intervene?
  - Who will track?
  - Who will develop community relationships and resource lists?
- Take time to do this well and involve the team to get buy-in



# Behavioral Health Integration Schematic



# Resources – COVID-19

- **The Center for the Study of Traumatic Stress**

- Publications and resources for providers, families, and leaders:

- <https://www.cstsonline.org/resources/resource-master-list/coronavirus-and-emerging-infectious-disease-outbreaks-response>

- Sustaining the Well-Being of Healthcare Personnel -

- [https://www.cstsonline.org/assets/media/documents/CSTS\\_FS\\_Sustaining\\_Well\\_Being\\_Healthcare\\_Personnel\\_during.pdf.pdf](https://www.cstsonline.org/assets/media/documents/CSTS_FS_Sustaining_Well_Being_Healthcare_Personnel_during.pdf.pdf)

- **The Center for Disease Control and Prevention (CDC)**

- Latest data and status on the spread, symptoms and testing, preparation guidelines, and more:

- <https://www.cdc.gov/coronavirus/2019-ncov/cases-updates/summary.html>

- Guidance for health care professionals: [https://www.cdc.gov/coronavirus/2019-](https://www.cdc.gov/coronavirus/2019-ncov/hcp/index.html)

- [nCoV/hcp/index.html](https://www.cdc.gov/coronavirus/2019-ncov/hcp/index.html)

- Managing Anxiety and Stress: [https://www.cdc.gov/coronavirus/2019-ncov/prepare/managing-](https://www.cdc.gov/coronavirus/2019-ncov/prepare/managing-stress-anxiety.html?CDC_AA_refVal=https%3A%2F%2Fwww.cdc.gov%2Fcoronavirus%2F2019-ncov%2Fabout%2F coping.html)

- [stress-anxiety.html?CDC\\_AA\\_refVal=https%3A%2F%2Fwww.cdc.gov%2Fcoronavirus%2F2019-ncov%2Fabout%2F coping.html](https://www.cdc.gov/coronavirus/2019-ncov/prepare/managing-stress-anxiety.html?CDC_AA_refVal=https%3A%2F%2Fwww.cdc.gov%2Fcoronavirus%2F2019-ncov%2Fabout%2F coping.html)

- **SAMHSA resources**

- COVID-19 Guidance for Opioid Treatment Programs: [https://www.samhsa.gov/medication-](https://www.samhsa.gov/medication-assisted-treatment/statutes-regulations-guidelines/covid-19-guidance-otp)

- [assisted-treatment/statutes-regulations-guidelines/covid-19-guidance-otp](https://www.samhsa.gov/medication-assisted-treatment/statutes-regulations-guidelines/covid-19-guidance-otp)

# Resources – SDOH

- **Social Interventions Research & Evaluation Network (SIREN):**
  - Tools and Resources: <https://sirennetwork.ucsf.edu/tools-resources>
  - Patients' attitudes and perceptions regarding social needs screening and navigation: Multi-site survey in a large integrated health system: <http://sirennetwork.ucsf.edu/tools-resources/resources/patients-attitudes-and-perceptions-regarding-social-needs-screening-and>
- **Putting Learning into Practice to Innovate and Improve Patient Services; A Case Study of Seattle's Children's Hospital:**  
<http://healthleadsusa.org/wp-content/uploads/2020/02/Seattle-Childrens-Case-Study-Final.pdf>
- **Center for Health Care Strategies, Inc.;** Screening for Social Determinants of Health in Populations with Complex Needs: Implementation Considerations: <https://www.chcs.org/media/SDOH-Complex-Care-Screening-Brief-102617.pdf>
- **Oregon Coordinated Care Organizations (COOs)** annual survey: <https://www.oregon.gov/oha/OHPB/Documents/OHA%20Member%20Survey%20August%202018.pdf>

# Contact Us

Lori Raney, MD

[lraney@healthmanagement.com](mailto:lraney@healthmanagement.com)

Caitlin Thomas-Henkel, LCSW

[cthomashenkel@healthmanagement.com](mailto:cthomashenkel@healthmanagement.com)

# Questions?



# Upcoming Webinars & Events

## **Webinar – No Two People Are the Same: Respecting Cultural Diversity when Delivering Healthcare**

April 22, 2:00-3:00pm ET

**Register** from our website here:

[https://zoom.us/webinar/register/4315826397931/WN\\_zdq9L4lyR\\_qdff4H4rFRvw](https://zoom.us/webinar/register/4315826397931/WN_zdq9L4lyR_qdff4H4rFRvw)

**Learning Communities and ECHOs** – Learn more on our website here: <https://www.thenationalcouncil.org/integrated-health-coe/learning-collaboratives/>

**Relias Online Trainings** – Learn more on our website here: <https://www.thenationalcouncil.org/integrated-health-coe/training-events/>

**Request Technical Assistance** - <https://www.thenationalcouncil.org/integrated-health-coe/request-assistance/>



# Thank You

## Questions?

Email [integration@thenationalcouncil.org](mailto:integration@thenationalcouncil.org)

SAMHSA's Mission is to reduce the impact of substance abuse and mental illness on America's communities.

**[www.samhsa.gov](http://www.samhsa.gov)**

1-877-SAMHSA-7 (1-877-726-4727) 1-800-487-4889 (TDD)