

CoE-IHS Office Hour: General Health Integration (GHI) ECHO Information Session

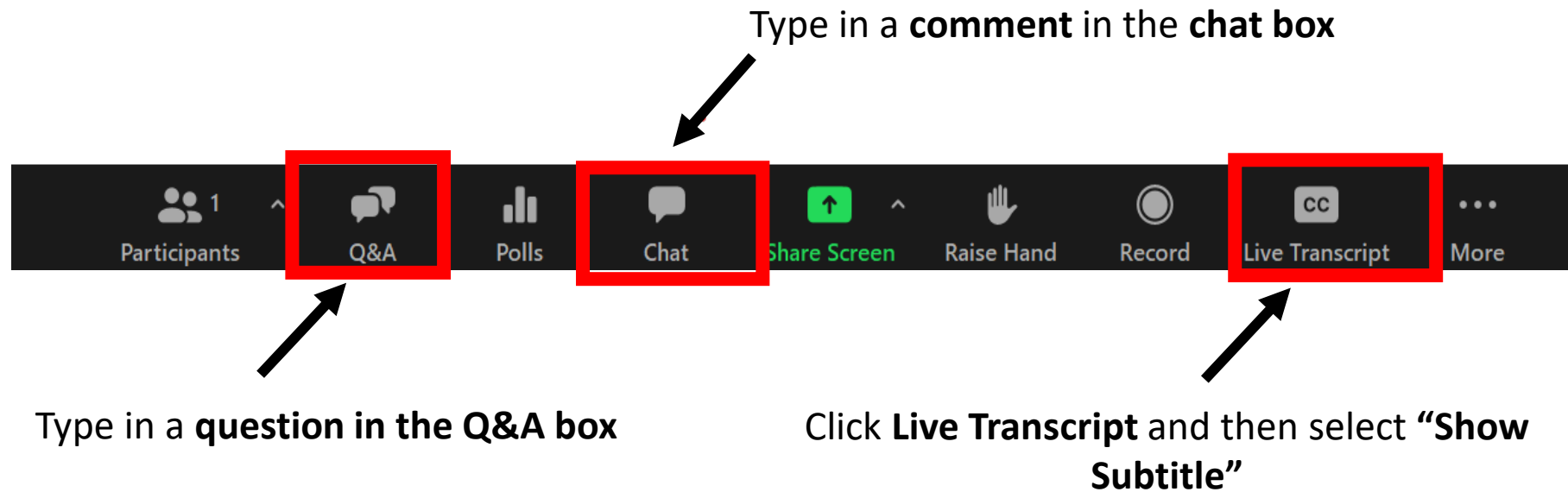
Wednesday, October 19th, 2022

3-4pm ET

CENTER OF EXCELLENCE for Integrated Health Solutions

Funded by Substance Abuse and Mental Health Services Administration and operated by the National Council for Mental Wellbeing

Questions, Comments & Closed Captioning



Disclaimer

The views, opinions, and content expressed in this presentation do not necessarily reflect the views, opinions, or policies of the Center for Mental Health Services (CMHS), the Substance Abuse and Mental Health Services Administration (SAMHSA), or the U.S. Department of Health and Human Services (HHS).

SAMHSA

Substance Abuse and Mental Health
Services Administration

www.samhsa.gov

NATIONAL
COUNCIL
for Mental
Wellbeing



GHI ECHO Leadership Team



GHI ECHO Director

Henry Chung, MD
Professor of Psychiatry
Albert Einstein College of
Medicine



GHI ECHO Co-Director

**Ekaterina (Katy) Smali, MPA
MPH PMP**
Project Manager, Montefiore
Care Management



Expert Consultant

Rachel Talley, MD
Assistant Professor of Clinical
Psychiatry, Department of
Psychiatry at the University of
Pennsylvania



Expert Consultant

Nick Szubiak, MSW, LCSW
Principal, NSI Strategies



General Health Integration (GHI) Framework


- The GHI framework focuses on integration of general health in community behavioral health settings for adult patients.
- Its 8 domains are designed to help prepare BH clinics to address general health risk factors and chronic illness.
- It helps BH clinics develop operational plans to achieve effective, evidence-based GHI. It aids assessment of their current state of integration and measure progress as integration plans are implemented.
- It has been used and evaluated in the field by BH organizations across multiple states as part of the recently completed GHI National Council Learning collaborative.
- It has been widely disseminated through national and regional presentations and in both a white paper and a peer reviewed publication.


NATIONAL
COUNCIL
for Mental
Wellbeing



GHI Learning Collaborative 19 Participants

AR		<ul style="list-style-type: none"> Mid-South Health Systems, Inc. / Arisa Health 	MI		<ul style="list-style-type: none"> Hegira Health, Inc. Saginaw County Community Mental 	PA		<ul style="list-style-type: none"> Northeast Treatment Centers
IA		<ul style="list-style-type: none"> Abbe Center for Community Mental Health 	NE		<ul style="list-style-type: none"> Lutheran Family Services 	TN		<ul style="list-style-type: none"> Centerstone of Tennessee
IN		<ul style="list-style-type: none"> Centerstone of Indiana Four County Hamilton Center, Inc. 	NY		<ul style="list-style-type: none"> BestSelf Behavioral Health Institute for Community Living, Inc. Washington Heights Community Services, New York State Psychiatric Institute Westchester Jewish Community Services 	TX		<ul style="list-style-type: none"> Sabine Valley Regional MHMR dba Community Healthcore
MA		<ul style="list-style-type: none"> Center for Human Development Gandara Center High Point Treatment Center 				WV		<ul style="list-style-type: none"> FMRS Health Systems, Inc.

 **Certified Community Behavioral Health Clinic (CCBHC)**

 **Non-CCBHC**



GHI Learning Collaborative Findings

- Organizational GHI advancement reported by 19 community behavioral health clinics participating in the collaborative over 12 months.
- Clinics provided monthly data reports for 9 quality metrics (e.g., access to primary care, diabetes screening, unhealthy drug and alcohol use). Preliminary impact findings include:
 - Improvement in measure reporting and performance

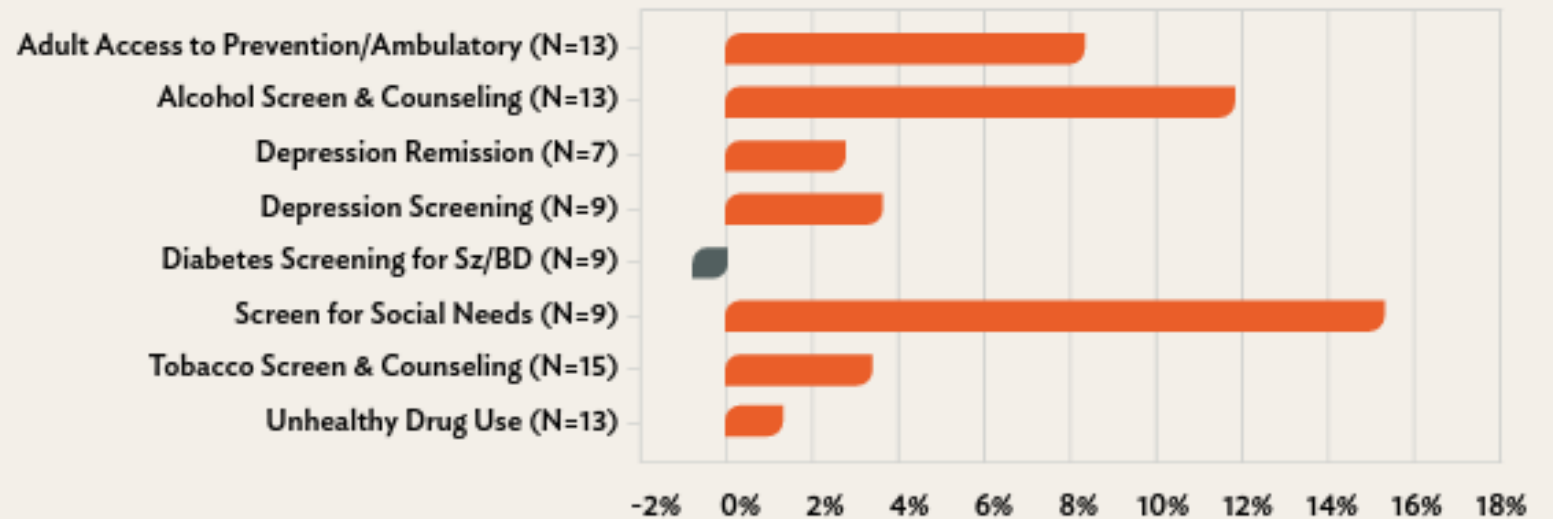
General Health Integration Learning Collaborative: Mid-Year Findings

View infographic here: [Mid-Year Findings One Pager](#)

(APRIL - AUGUST 2021)
Organizations have
improved performance by:

- Increasing the number of measures and completeness of measures reported
- Improving quality of care, across a range of general health measures

Average Change in Quality Measures of Participating Practices During the First 5 Months



ECHO Overview

Purpose: *To advance the ability of community behavioral health practices to integrate general health care into their setting and inform policymakers, payers and providers in sustaining and expanding integration efforts.*

Goal: Provide community behavioral health organizations with the opportunity to advance general health integration and gain insights on GHI implementation strategies, quality metrics, policy and sustainability opportunities.

Activities: Attend 7 monthly ECHO sessions, case-based learning, surveys to measure GHI advancement and ECHO experience and technical assistance.

Registration: [Apply](#) by **October 28, 2022**. The ECHO session will kick off on Thursday, November 17, 2022, from 2:00 – 3:30pm ET.



ECHO Learning Objectives

- Understand the importance of integrating general health and within mental health and substance use treatment services to improve whole-person care using a value-based and sustainable approach.
- Gain knowledge and understanding of the key components of the GHI framework through didactic presentations and peer-to-peer learning.
- Assess organizational baseline for advancing and measuring progress at the end of the ECHO using the framework.
- Understand and use quality metrics to learn how to collect and document improved outcomes associated with GHI advancement.
- Develop and implement a prioritized integration tactical plan to help practices identify key tasks and deliverables.
- Engage with peers and experts to learn and share about successes, challenges, and sustainability as it relates to implementing GHI integration.
- Share existing tools and resources for implementing and/or scaling GHI within participant's organizations.

ECHO Eligibility

1. Be a Certified Community Behavioral Health Clinic (CCBHC), either through the CCBHC-e Grant, CCBHC Demonstration or other CCBHC state level adoption, **OR** a mental health and substance use treatment organization who is pursuing a comprehensive and coordinated approach to general health with relevant organizational strengths that will advance integration in the practice.
2. Have an EHR in use for at least 1 year with no plans to change or migrate the EHR system within the next 1-2 years. In addition, having an EHR that has the ability to collect and report on at least two general health quality metrics such as annual tobacco use screening with cessation treatment and annual screening for access to primary care.
3. Serve at least 500 mental health and/or substance use adult patients annually with the ability to identify high-risk patients with co-morbid general health conditions.
4. Have an established multi-disciplinary team (e.g., behavioral health provider, LCSW, RN, care manager, clinic manager/director) with executive leadership supporting ECHO efforts.
5. Have a designated clinic integration champion to lead ECHO participation and complete ECHO survey reporting.

GHI ECHO Session Schedule (Tentative)

#	Session Topic	Date and Time
1	Introduction to GHI Framework and Guidance for Baseline Assessment	Thursday, 11/17/22 2-3:30 p.m. ET/11 a.m.-12:30 p.m. PT
2	Summary of baseline assessment results to identify opportunities for advancement	Tuesday, 1/10/22 12-1:30 p.m. ET/9-10:30 a.m. PT
3	Peer to peer learning and didactic presentation (Topic TBA)	Tuesday, 2/14/22 12-1:30 p.m. ET/9-10:30 a.m. PT
4	Peer to peer learning and didactic presentation (Topic TBA)	Tuesday, 3/14/22 12-1:30 p.m. ET/9-10:30 a.m. PT
5	Peer to peer learning and didactic presentation (Topic TBA)	Tuesday, 4/11/22 12-1:30 p.m. ET/9-10:30 a.m. PT
6	Peer to peer learning and didactic presentation (Topic TBA)	Tuesday, 5/9/22 12-1:30 p.m. ET/9-10:30 a.m. PT
7	Summary of final assessment results and takeaway from peer learning experience	Tuesday, 6/27/22 12-1:30 p.m. ET/9-10:30 a.m. PT

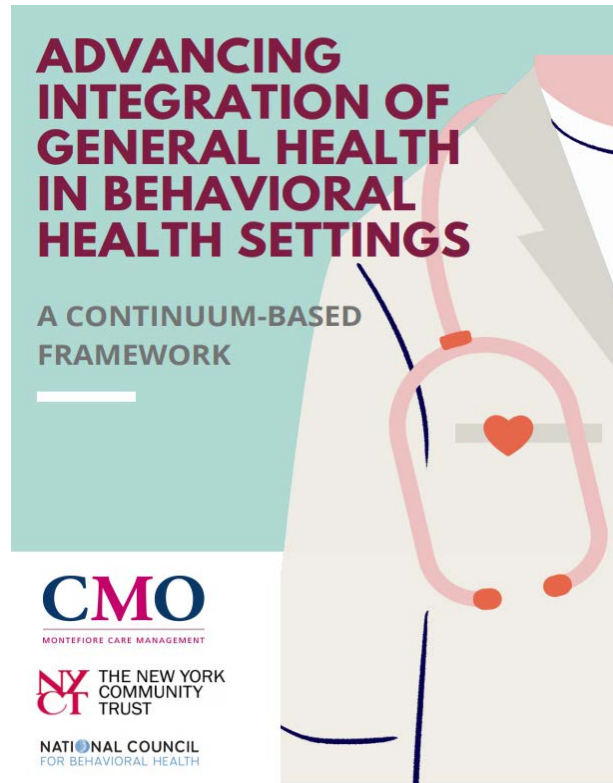


Participation Requirements

- There are **no costs** associated with participating in this ECHO series.
- **Attendance & Participation** - Team lead and at least one other team member commit to engaging in and attending all 7 of the sessions within the series.
- **Case Presentation** - All participating organizations will be asked to submit at least one case presentation describing their organization's experiences, challenges, and opportunities for advancing GHI to better support clients and staff.
- **Surveys** - Participants will be asked to complete surveys before, during, and after the ECHO series ends. There are two types of surveys we expect to be distributed:
 1. **Planning & Engagement:** Questionnaires to assist the planning team in regularly improving and updating learning and engagement methods during this ECHO and for future ECHOs.
 2. **Framework Assessment and Quality Metrics:** Framework survey to assess practice baseline and 7-month progress. In addition, reporting on progress measuring at least one GHI quality metrics (e.g., tobacco use, access to primary care).



GHI Framework Publications



Learn more about the [framework](#).

› [Community Ment Health J.](#) 2021 Feb 27. doi: 10.1007/s10597-021-00802-z. Online ahead of print.

Implementation of Behavioral Health Integration in Small Primary Care Settings: Lessons Learned and Future Directions

Matthew L Goldman^{1,2}, Ekaterina Smali³, Talia Richkin⁴, Harold Alan Pincus⁵, Henry Chung⁶

Affiliations + expand

PMID: 33638059 DOI: 10.1007/s10597-021-00802-z

Abstract

Primary care practices are in great need of practical guidance on the steps they can take to build behavioral health integration (BHI) capacities, particularly for smaller practice settings with fewer resources. 11 small primary care sites (≤ 5 providers) throughout New York State utilized a continuum framework of core components of BHI in combination with technical assistance. Surveys were collected at baseline, 6-months, and 12-months. Semi-structured interviews and focus groups were conducted during site visits, and a stakeholder roundtable was facilitated to address broader themes. Data were analyzed using qualitative thematic analysis. Practices reported successful engagement with the framework and actively participated in planning and advancing BHI operations. Greater success was observed in practices with existing on-site BHI services, identified champions for BHI, early and sustained training and involvement of providers and administrators, use of collaborative agreements with external behavioral health providers, and capacity to successfully receive reimbursements for BHI services. Advancing health information technologies was a challenge across sites. Financing and policy factors were viewed as critically important to advance integration efforts. The pilot of a continuum framework offers lessons for primary care practices and policymakers to advance integrated BH care.

Keywords: Behavioral health integration; Financial sustainability; Implementation; Qualitative evaluation; Technology barriers.

Read the [peer reviewed journal article](#).

NATIONAL
COUNCIL
for Mental
Wellbeing



Tools & Resources

National Council for Mental Wellbeing

- Center of Excellence for Integrated Health Solutions – [Resource Home Page](#)
- [Utilizing an Evidence-based Framework to Advance Integration of General Health in Mental Health and Substance Use Treatment Settings](#) – Blog post
- [High-Functioning Team-Based Care Toolkit](#)

Other

- Agency for Healthcare Research & Quality – [Implementing a Team-Based Model in Primary Care Learning Guide](#)
- [Behavioral Health Integration into Primary Care Framework](#)



Questions, Comments?



NATIONAL
COUNCIL
for Mental
Wellbeing



Upcoming CoE Events

CoE-IHS Webinar: Culturally and Linguistically Appropriate Services Part 2 – Introduction to the CLAS Standards

[Register for the webinar](#) on Thursday, October 20th, 2-3pm ET

CoE-IHS Webinar: State Integration Models of Recovery Support Services

[Register for the Webinar](#) on Thursday, October 27th, 11:30am-1pm ET

Interested in an individual consultation with the CoE experts on integrated care?

[Contact us through this form here!](#)

Looking for free trainings and credits?

[Check out integrated health trainings from Relias here](#)

Subscribe for Center of Excellence Updates

[Subscribe here](#)



Thank You

GHI ECHO Questions?

Email: Katy Smali MPA MPH PMP, Project Manager, esmali@montefiore.org

Other Questions?

Integration@nationalcouncil.org

SAMHSA's Mission is to reduce the impact of substance abuse and mental illness on America's communities.

www.samhsa.gov

1-877-SAMHSA-7 (1-877-726-4727) 1-800-487-4889 (TDD)

