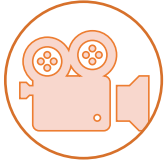


Enhancing the Effectiveness of Public Safety-led Overdose Prevention in BIPOC Communities

March 8, 2023

Housekeeping



This webinar is being recorded.



For audio access, you can join with computer audio
or dial into the conference line.



Please feel free to participate through the chat or leave questions using
the Q&A feature.



Closed Captioning has been enabled for this webinar. To access, please
click the CC icon located on your task bar.



Our Speakers



Elizabeth Burden
Senior Advisor
National Council for Mental Wellbeing



Melody Quinn
Opioid Prevention Initiative Detective
St. Louis County Police Department


Background

Disproportionate impact of overdose epidemic among communities of color

Historical trauma and lack of trust in the public safety system

Need for policies, practices, and approaches that address distinct contexts

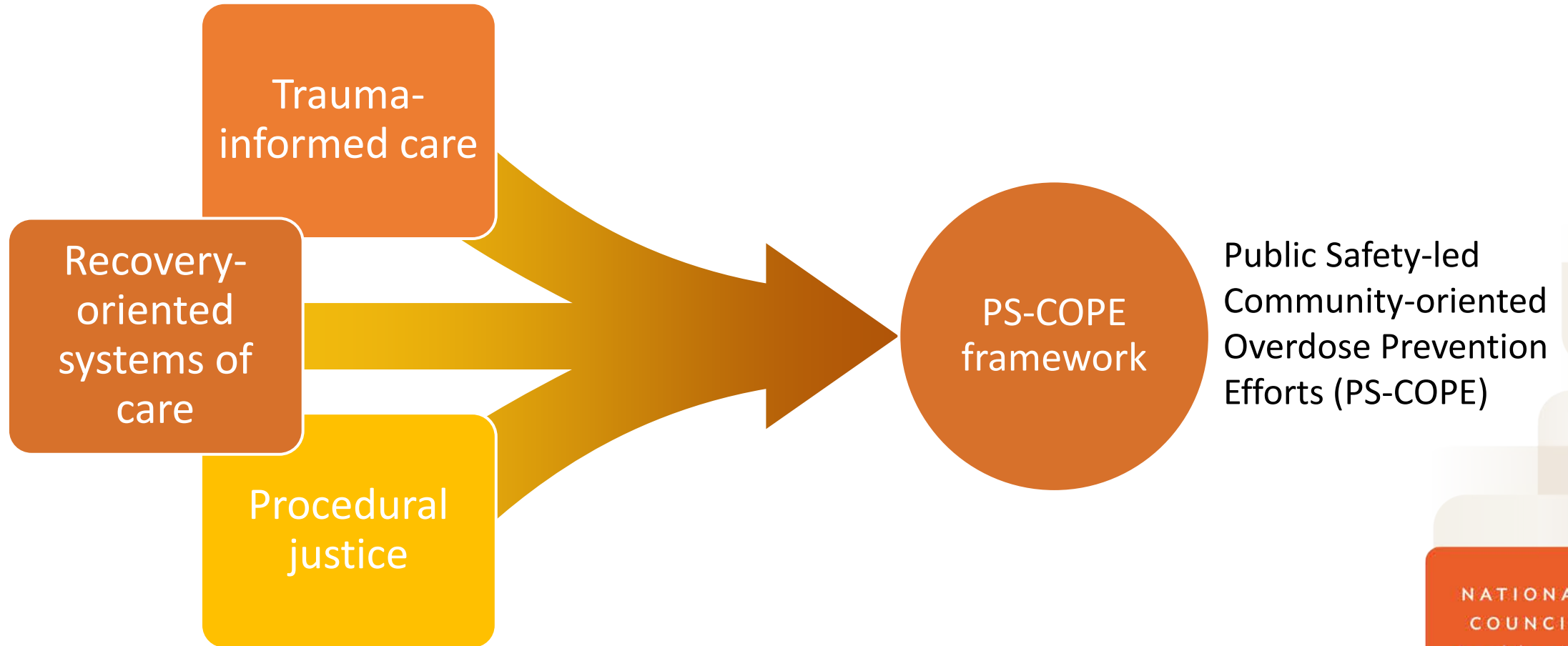




Public Safety-led
Community-oriented
Overdose Prevention
Efforts (PS-COPE)



A New Approach



PS-COPE Guiding Principles

1.

Create safety.

2.

Build trust.

3.

*Be person- and
community-oriented.*

4.

*Be culturally
responsive.*

5.

Engage many.

NATIONAL
COUNCIL
for Mental
Wellbeing



Community Engagement

Partnerships and community engagement are essential for successfully implementing PS-COPE.

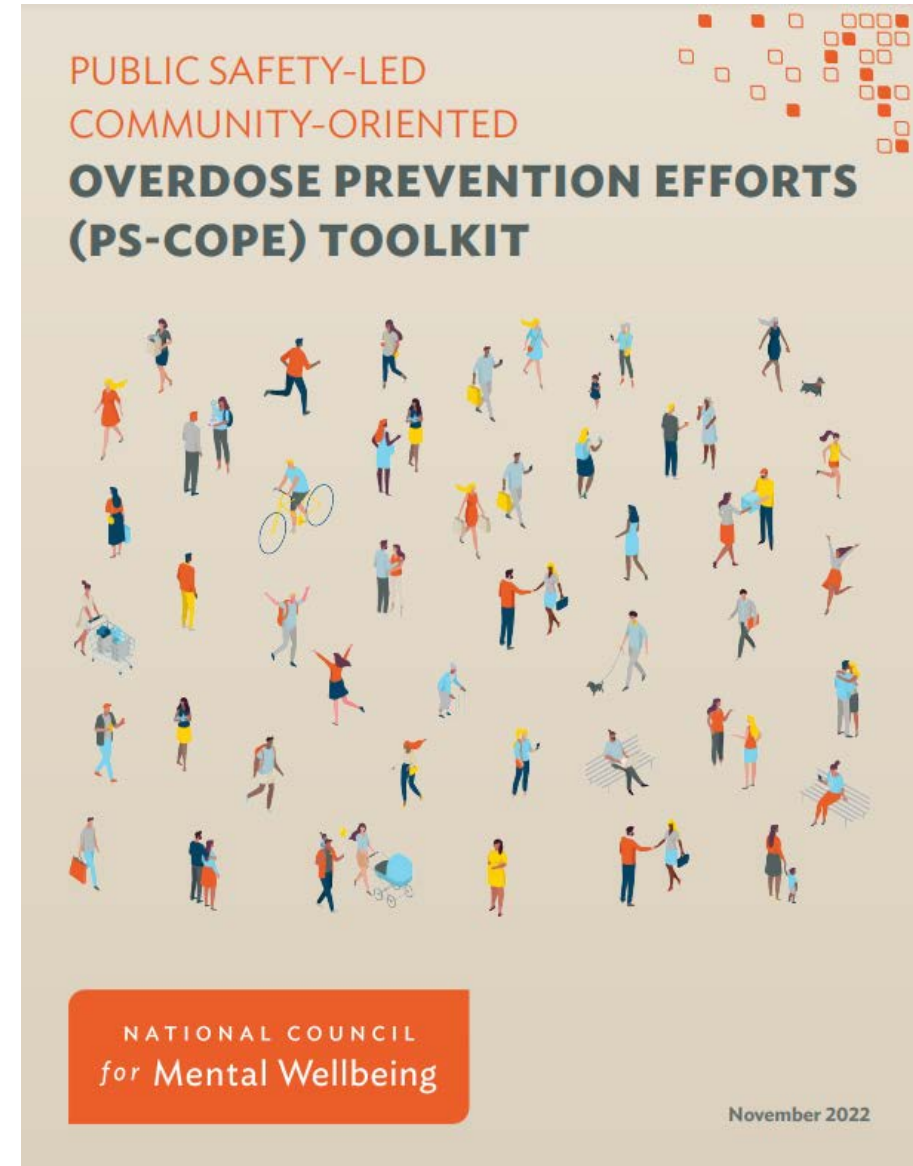


PS-COPE in the Field



Dialogue with
Detective Melody Quinn,
St. Louis CRUSH

Principles to Practice: PS-COPE Toolkit



<https://www.thenationalcouncil.org/resources/public-safety-cope/>

Toolkit Structure

- Guiding Principles
- Principles to Practice
 - Creating a Core Implementation Team
 - Infrastructure elements
 - Core Components
 - Integration Steps



Tips for practice



Implementation tools



External resources

Safe and Secure Environment Checklist



Creating a safe, secure, and welcoming environment for all is one of the requisite infrastructure elements of PS-COPE. This checklist contains some considerations to help guide programs in determining whether the requisite infrastructure is in place to implement PS-COPE.



Infrastructure Elements

Requisite infrastructure that supports and strengthens overdose prevention and response.

1.

Use information systems to support data-based decision-making.

2.

Establish and maintain safe, secure environments.

3.

Review and renew policies, procedures, and workflows.

4.

Develop a trained and responsive workforce.

5.

Monitor, evaluate, and improve the program.



Core Components

Specific practices and policies that can enhance overdose prevention and response.

1.

Collaborate with recovery resources.

2.

Connect with and mobilize the community.

3.

Screen and assess for overdose risk behaviors.

4.

Provide early intervention and continuing support.

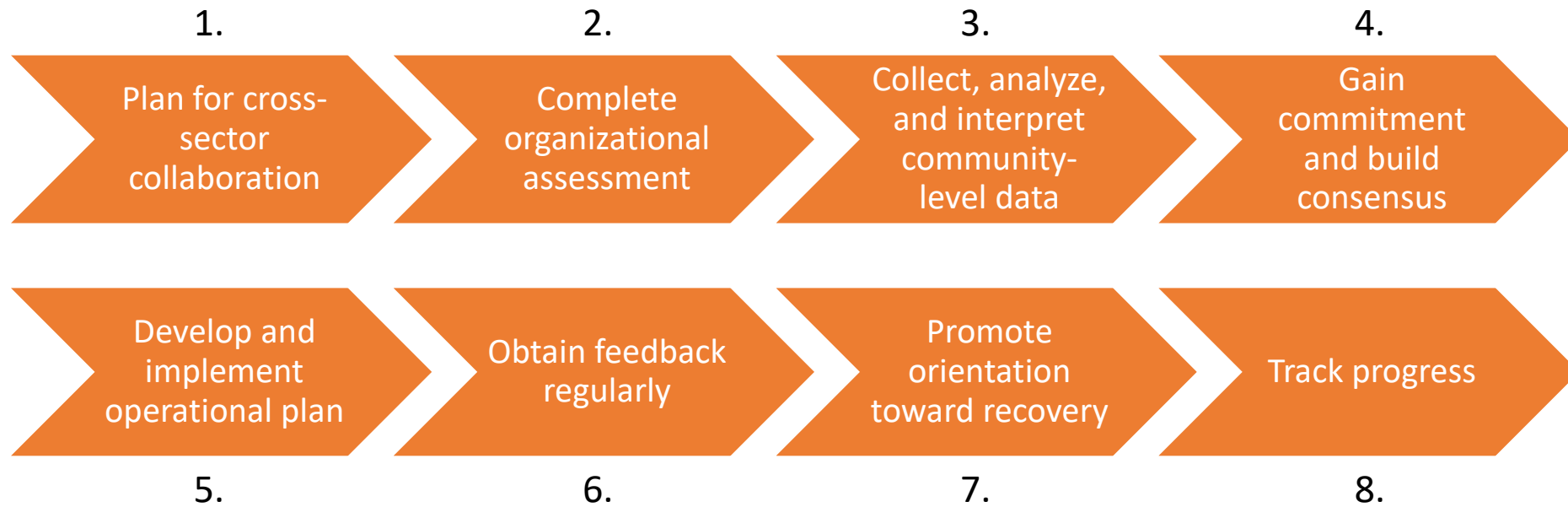
5.

Advocate to strengthen SUD services and systems.



Integration Steps

A step-by-step approach to integration to help your organization successfully implement PS-COPE.



NATIONAL
COUNCIL
for Mental
Wellbeing

PS-COPE in the Field



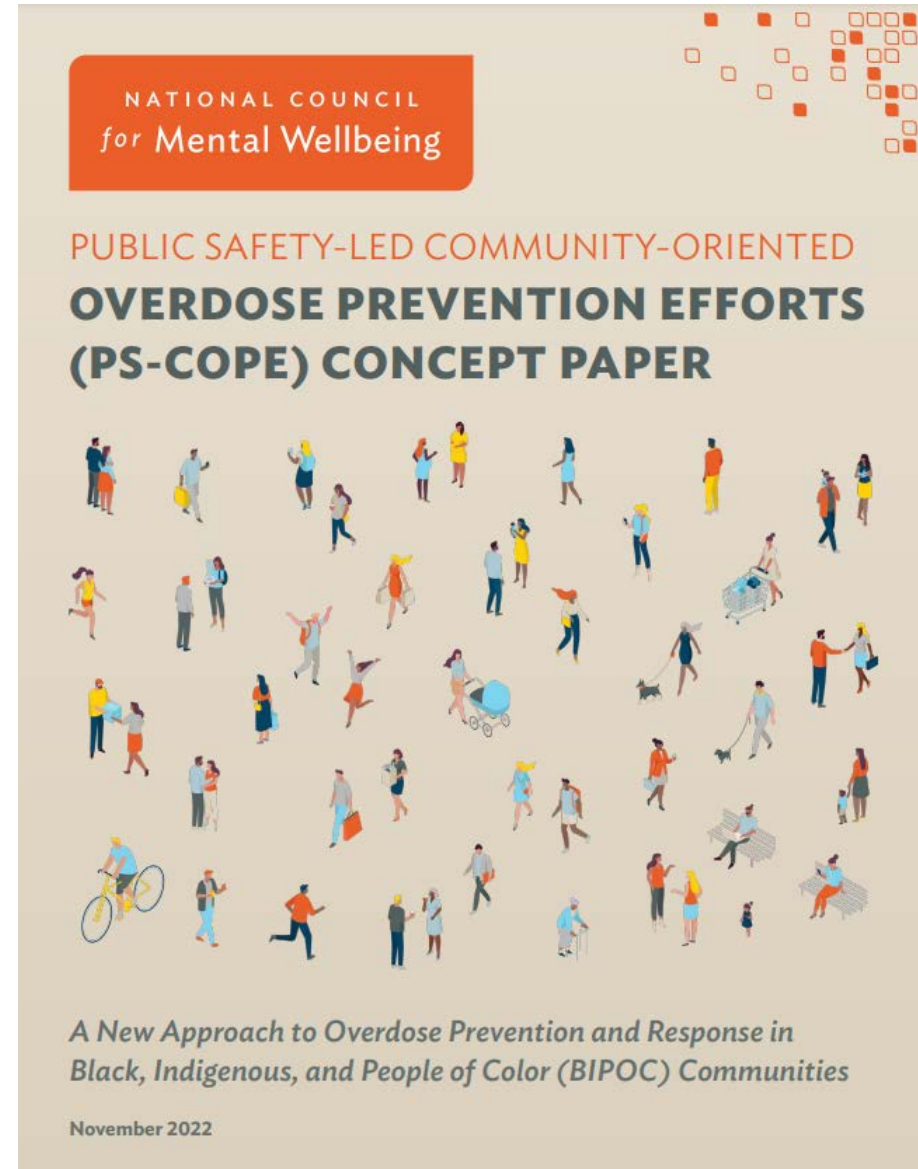
Dialogue with
Detective Melody Quinn,
St. Louis CRUSH

Q&A



NATIONAL
COUNCIL
for Mental
Wellbeing

If you would like more background information about the PS-COPE framework, please check out...



<https://www.thenationalcouncil.org/resources/public-safety-cope/>

Other National Council Resources

- [Addressing Health Equity and Racial Justice Online Resource Directory](#)
- [Tools and Resources for Deflection and Pre-arrest Diversion to Prevent Opioid Overdose](#)
- [Self-paced Courses for Overdose Prevention and Response in Community Corrections](#)
- [Medication-Assisted Treatment \(MAT\) for Opioid Use Disorder in Jails and Prisons: A Planning and Implementation Toolkit](#)
- [Overdose Response and Linkage to Care: A Roadmap for Health Departments](#)
- [Establishing Peer Support Services for Overdose Response: A Toolkit for Health Departments](#)
- [Supporting Telehealth and Technology-assisted Services for People Who Use Drugs: A Resource Guide](#)





NATIONAL
COUNCIL
for Mental
Wellbeing