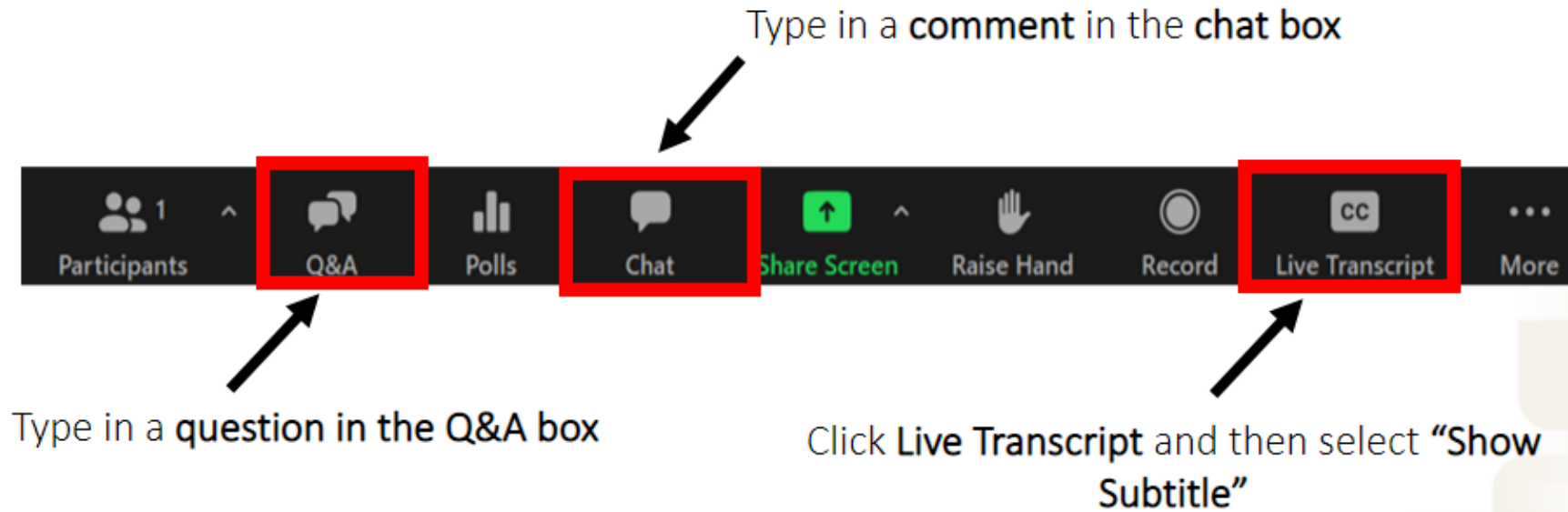


CoE-IHS Office Hour:
Peers Part 2- Peer Support Service
Models Success in Integrated Care
Settings

Thursday, March 23, 2023
3-4pm ET

Questions, Comments & Closed Captioning



Disclaimer

The views, opinions, and content expressed in this presentation do not necessarily reflect the views, opinions, or policies of the Center for Mental Health Services (CMHS), the Substance Abuse and Mental Health Services Administration (SAMHSA), or the U.S. Department of Health and Human Services (HHS).



NATIONAL
COUNCIL
for Mental
Wellbeing

Webinar Series Details

Next Session in the Series... Register Today!

- [Peers Part 3- Peer Support Office Hour/Q&A Session](#)

Past Session Recording:

- [Peers Part 1 - Leveraging the Untapped Potential of Peer Services in Integrated Care](#)

This session's recording and slides will be sent to you tomorrow via email.



Today's Speakers



Joan Kenerson King, RN, MSN
Senior Consultant
National Council for Mental Wellbeing



Deb Carlson, CPRS, CCHW
Coordinator of Peer Services and
Peer Support Supervisor
Newport Mental Health Center



Sadie Thompson, CPSS
Chief Implementation Officer of
Wellbeing Initiative, Inc.



Megkian Doyle, Ed.D.
Executive Director, Mountain Shadow
Association & Director, Regional
Community Action Team, One Health



Models of success in Integrated Care Settings

Integrated care requires person-centered and individualized approaches that target the unique needs of clients and communities. Peer support specialists can play an influential role in providing person-centered and integrated services, as they bring unique skills and lived experience to help support clients through their recovery journey.



Community Health Worker

Peer specialist

Recovery specialist

NATIONAL
COUNCIL
for Mental
Wellbeing

Tools & Resources

- [Center of Excellence for Integrated Health Solutions](#)
- [Tools for Overdose Prevention](#)
- [Establishing Peer Support Services for Overdose Response: A Toolkit for Health Departments](#)
- [Peer Services Toolkit: A Guide to Advancing & Implementing Peer-run BH Services](#) (Mental Health America)
- [Peer Support Toolkit – Department of Behavioral Health & Intellectual Disability Services](#) (City of Philadelphia DBHIDS)
- [Peer Support Workers for those in Recovery](#) (SAMHSA)
 - [Value of Peers](#)
 - [Peers Supporting Recovery from MH Conditions](#)
 - [Peers Supporting Recovery from SUD](#)
- [Implementation of Peer Providers in Integrated MH & PC Settings](#)
- [Integrating Peer Support Workers in Interdisciplinary Care Teams](#)
- [Meaningful Roles for Peer Providers in Integrated Healthcare](#)
- [State Mental Health Agency Peer Specialist Workforce 2022](#)



Upcoming CoE Events

CoE Office Hour: Workforce Development & Psychological Safety among BIPOC Women in Leadership

[Register for the office hour](#) on Thursday, March 29th, 1-2pm ET

CoE-IHS Office Hour: Peers Part 3- Peer Support Office Hour/Q&A Session

[Register for the office hour](#) on Tuesday, April 11th, 2-3pm ET

Interested in an individual consultation with the CoE experts on integrated care?

[Contact us through this form here!](#)

Looking for free trainings and credits?

[Check out integrated health trainings from Relias here](#)

Subscribe for Center of Excellence Updates

[Subscribe here](#)

Thank You

Questions?

Email integration@thenationalcouncil.org

SAMHSA's Mission is to reduce the impact of substance abuse and mental illness on America's communities.

www.samhsa.gov

1-877-SAMHSA-7 (1-877-726-4727) 1-800-487-4889
(TDD)