

NATIONAL
COUNCIL
for Mental
Wellbeing

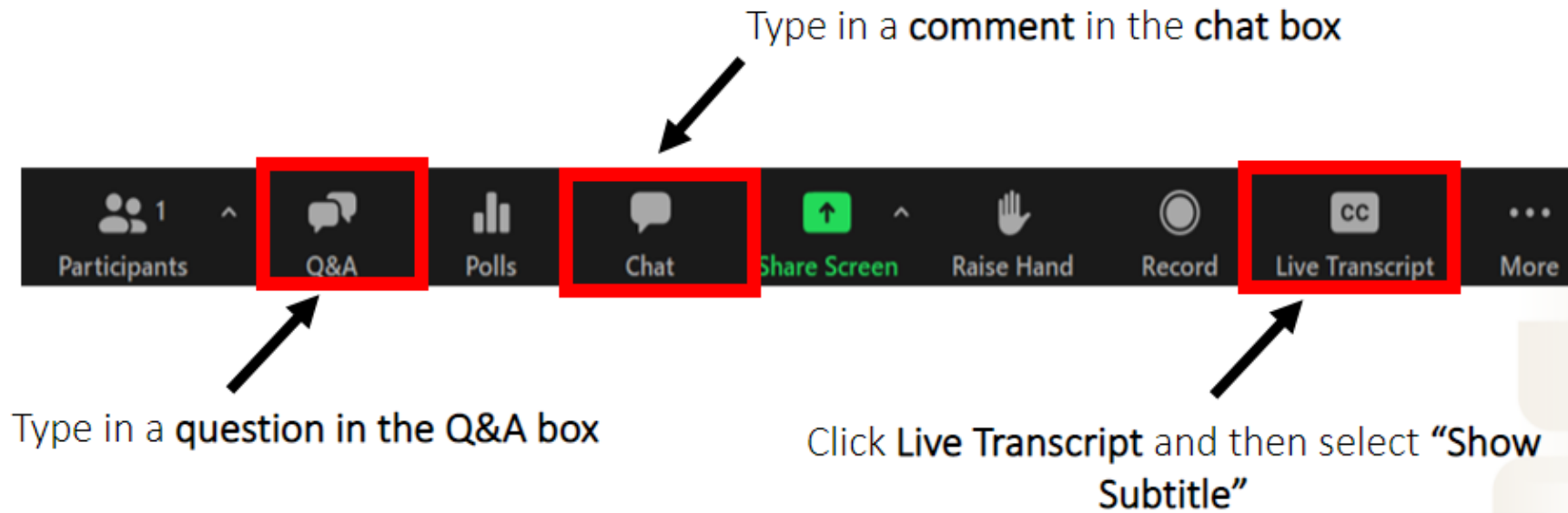
CoE-IHS Office Hour: Peers Part 3- Peer Support in Integrated Care - Q&A Session

Tuesday, April 11, 2023
2-3pm ET

CENTER OF EXCELLENCE for Integrated Health Solutions

Funded by Substance Abuse and Mental Health Services Administration and operated by the National Council for Mental Wellbeing

Questions, Comments & Closed Captioning



Disclaimer

The views, opinions, and content expressed in this presentation do not necessarily reflect the views, opinions, or policies of the Center for Mental Health Services (CMHS), the Substance Abuse and Mental Health Services Administration (SAMHSA), or the U.S. Department of Health and Human Services (HHS).



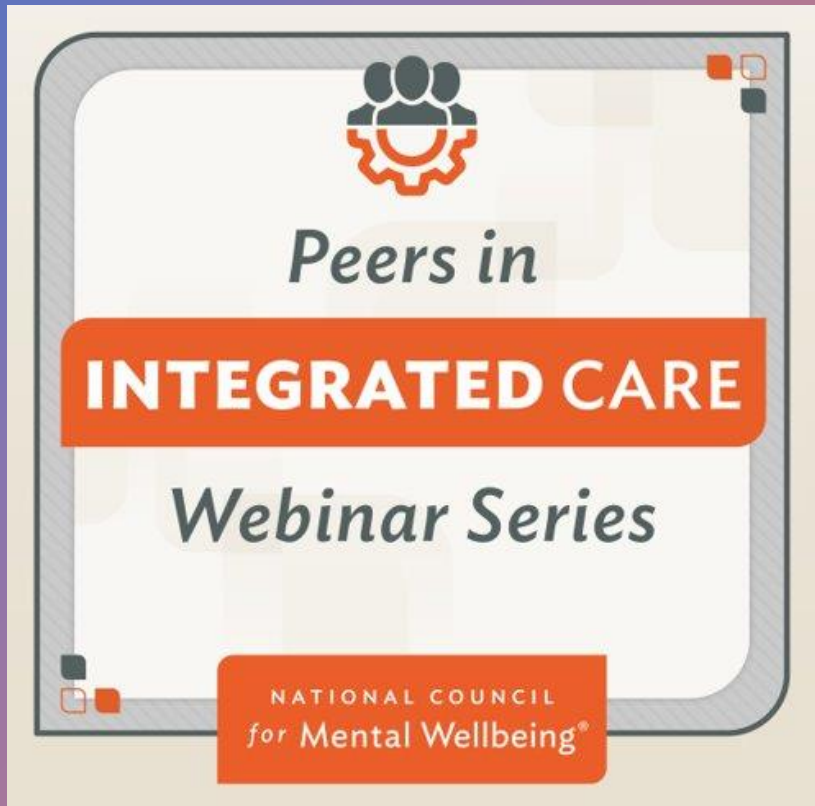
NATIONAL
COUNCIL
for Mental
Wellbeing

Webinar Series Details

Past Session Recording:

- [Peers Part 1 - Leveraging the Untapped Potential of Peer Services in Integrated Care](#)
- [Peers Part 2- Peer Support Service Models Success in Integrated Care Settings](#)

This session's recording and slides will be sent to you tomorrow via email.



Today's Speakers



Joan Kenerson King, RN, MSN
Senior Consultant, National Council for
Mental Wellbeing



Sadie Thompson, CPSS
Chief Implementation Officer of Wellbeing
Initiative, Inc.



Megkian Doyle, Ed.D,
Executive Director, Mountain Shadow Association
& Director, Regional Community Action Team,
One Health



Deb Carlson, CPRS, CCHW
Coordinator of Peer Services and Peer
Support Supervisor, Newport Mental Health
Center



Mona Lisa McEachin, CRPA, CRPA-F, NYCPS,
Assistant Program Director of Recovery Community
& WNY Peer Workforce Development Center
BestSelf Behavioral Health, Inc.



Peer Support in Integrated Care Settings

Integrated care requires individualized approaches that target the unique needs of clients and communities. Peer support specialists can play an influential role in providing person-centered and integrated services by bringing unique skills and lived experience to help support clients through their recovery journey.



Community Health Worker

Peer specialist

Recovery specialist

NATIONAL
COUNCIL
for Mental
Wellbeing



Tools & Resources

- [Center of Excellence for Integrated Health Solutions](#)
- [Tools for Overdose Prevention](#)
- [Establishing Peer Support Services for Overdose Response: A Toolkit for Health Departments](#)
- [Peer Services Toolkit: A Guide to Advancing & Implementing Peer-run BH Services](#) (Mental Health America)
- [Peer Support Toolkit – Department of Behavioral Health & Intellectual Disability Services](#) (City of Philadelphia DBHIDS)
- [Peer Support Workers for those in Recovery](#) (SAMHSA)
 - [Value of Peers](#)
 - [Peers Supporting Recovery from MH Conditions](#)
 - [Peers Supporting Recovery from SUD](#)
- [Implementation of Peer Providers in Integrated MH & PC Settings](#)
- [Integrating Peer Support Workers in Interdisciplinary Care Teams](#)
- [Meaningful Roles for Peer Providers in Integrated Healthcare](#)
- [State Mental Health Agency Peer Specialist Workforce 2022](#)



Upcoming CoE Events

CoE Office Hour: Suicide Prevention and Post-Partum Depression among Black & African American Women

[Register for the office hour](#) on Wednesday, April 12th, 1-2pm ET

CoE-IHS Webinar: Part 1: Leveraging Telehealth to Improve Access & Reach in Rural Integrated Care

[Register for the webinar](#) on Thursday, April 20th, 2-3pm ET

Interested in an individual consultation with the CoE experts on integrated care?

[Contact us through this form here!](#)

Looking for free trainings and credits?

[Check out integrated health trainings from Relias here](#)

Subscribe for Center of Excellence Updates

[Subscribe here](#)

NATIONAL
COUNCIL
*for Mental
Wellbeing*

Thank You

Questions?

Email integration@thenationalcouncil.org

SAMHSA's Mission is to reduce the impact of substance abuse and mental illness on America's communities.

www.samhsa.gov

1-877-SAMHSA-7 (1-877-726-4727) 1-800-487-4889
(TDD)

NATIONAL
COUNCIL
*for Mental
Wellbeing*

