



NATIONAL  
COUNCIL  
*for* Mental  
Wellbeing

# Establishing Continuous Quality Improvements Systems with Fidelity and Quality Monitoring

June 28, 2023

**CCBHC-E National Training and Technical Assistance Center**

*Funded by Substance Abuse and Mental Health Services Administration and operated by the National Council for Mental Wellbeing*

**UConn**  
SCHOOL OF SOCIAL WORK  
INNOVATIONS INSTITUTE

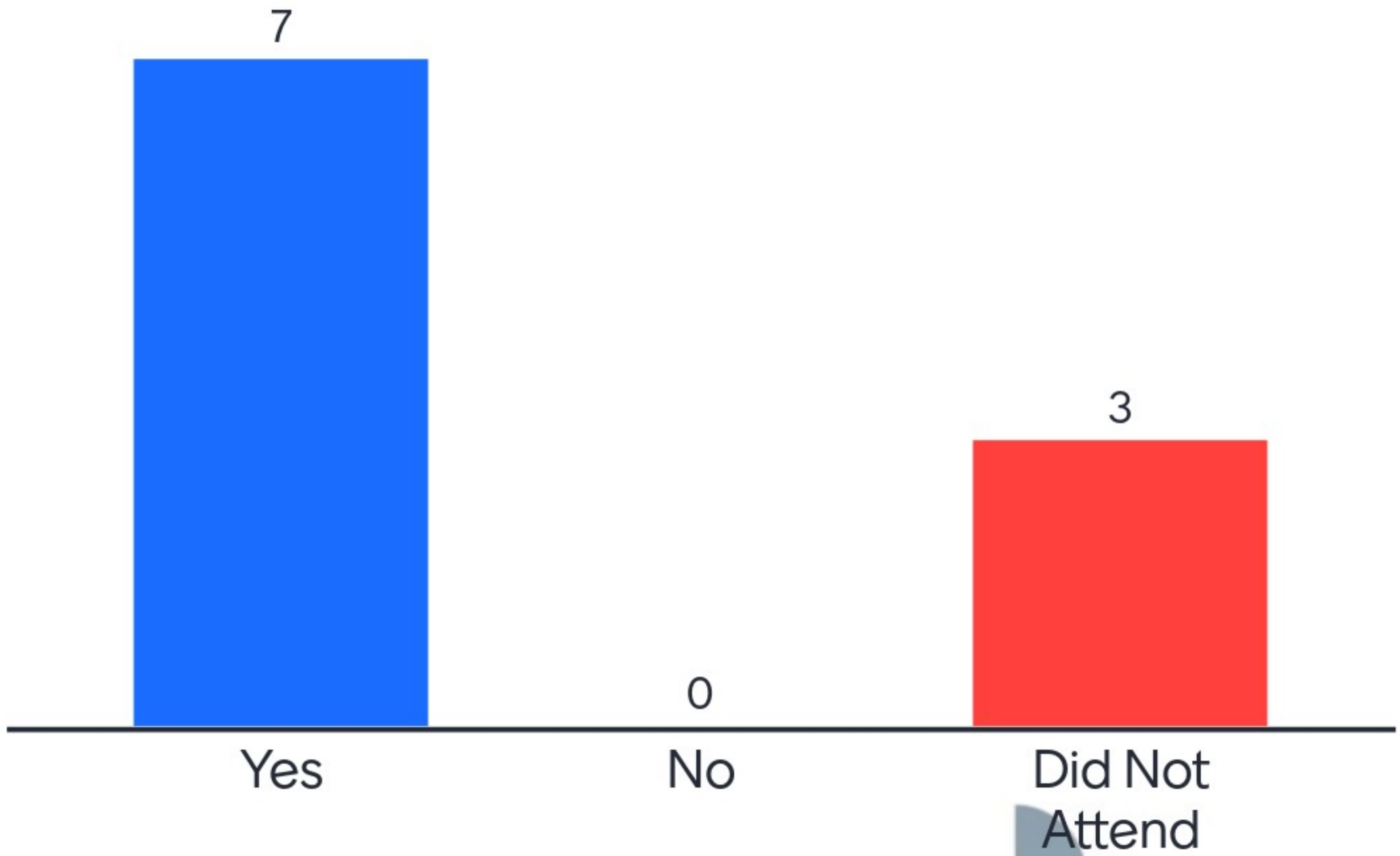


# Acknowledgements and Disclaimer

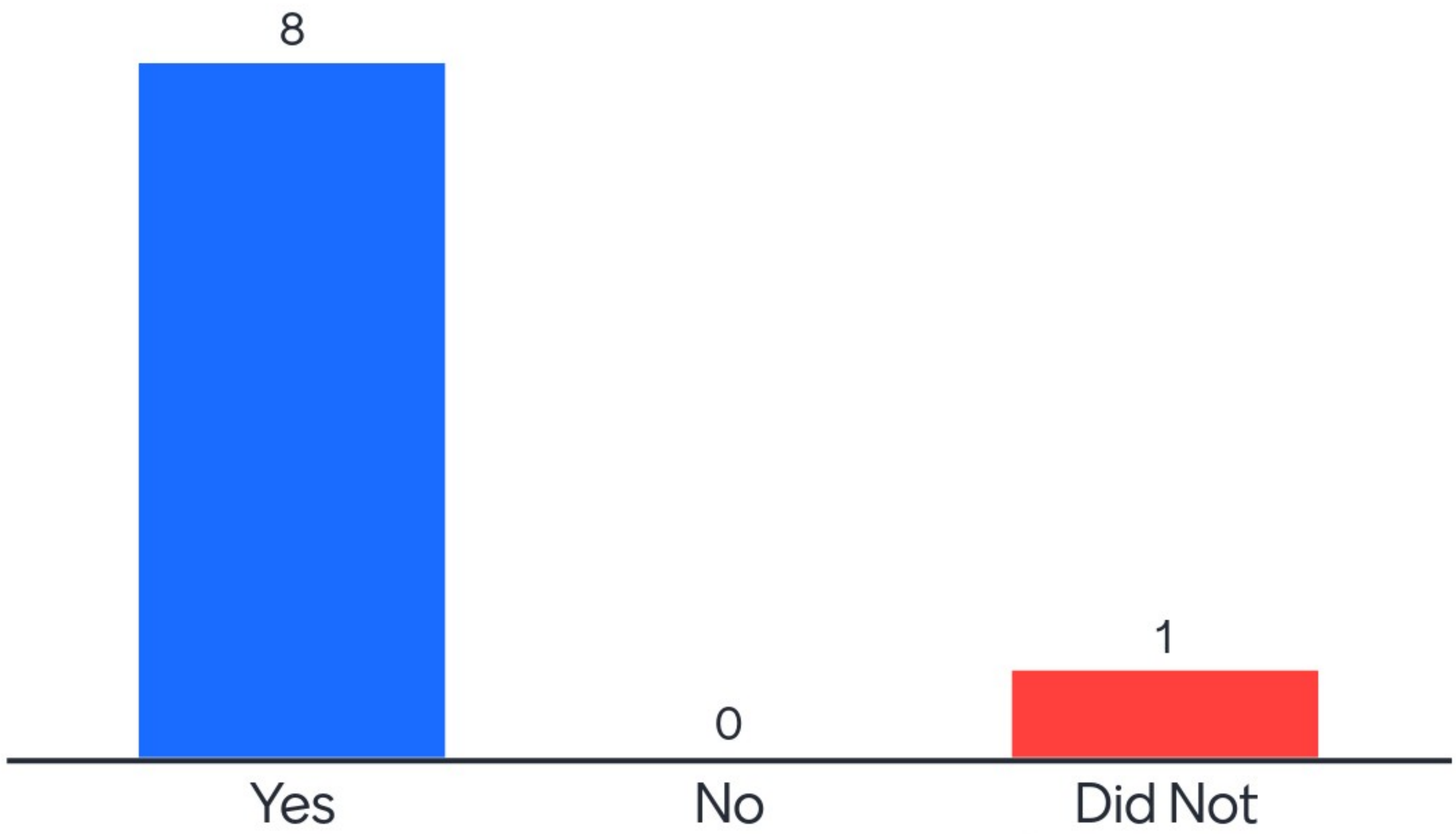
*This publication was made possible by Grant Number 1H79SM085856 from the Substance Abuse and Mental Health Services Administration (SAMHSA). Its contents are solely the responsibility of the authors and do not necessarily represent the official views, opinions, or policies of SAMHSA, or the U.S. Department of Health and Human Services (HHS).*



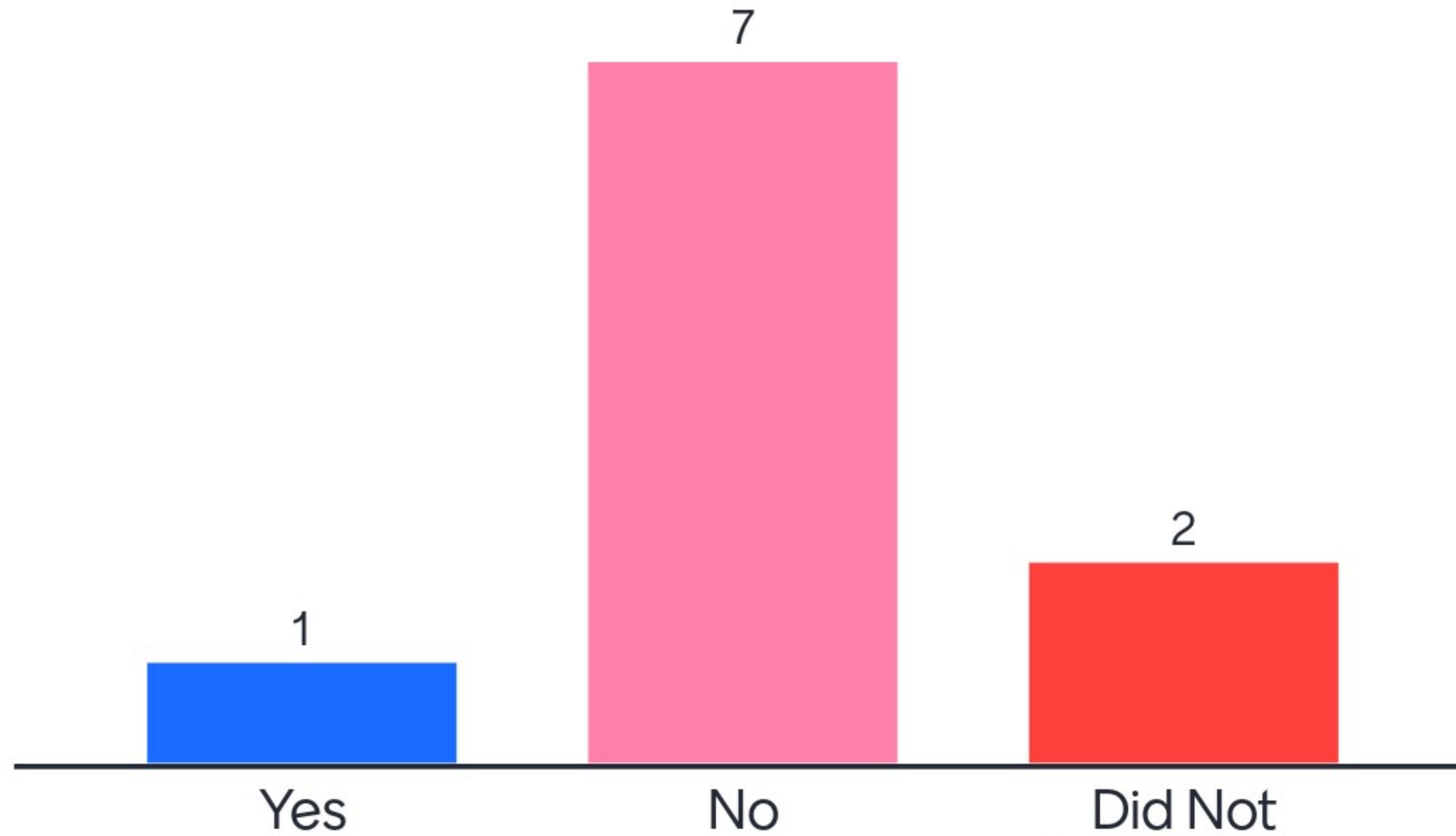
Was the information presented in the last session applicable to the current stage of implementation in your agency?



# Did you share the information with others in your agency?



# Did you use the information?



# Where are you currently in your implementation science pilot development?



# What barriers prevent you from engaging in a research or implementation project?



# CCBHC-E NTTAC/SAMHSA Updates

- CCBHC-E NTTAC Updates
  - Discussion: August and September Learning Community Sessions
  - Website for learning community participants: <https://www.thenationalcouncil.org/implementation-science-pilot-learning-community/>
- SAMHSA Updates
  - Upcoming webinar for partnered organizations



# 0 = Not at all, 5 = Somewhat, 10 = Completely



# Learning Objectives

Participants will:

- Explore key concepts of continuous quality improvement systems and how research partnerships can support the process
- Understand how implementation teams that include researcher partners can support CQI system development
- Understand how to prioritize data elements for CQI systems in partnership with researchers
- Understand the types of data included in CQI systems and how they can benefit your team and researchers
- Understand how implementation teams use data to advance equitable outcomes



# Presenters



Jill Farrell, PhD  
Research Assistant Professor  
Deputy Director, Division of Research & Evaluation  
The Institute for Innovation and Implementation  
University of Maryland, School of Social Work



Jaymie Lorthridge, PhD, MSW – Senior Research Associate  
Kaye Implementation & Evaluation, LLC



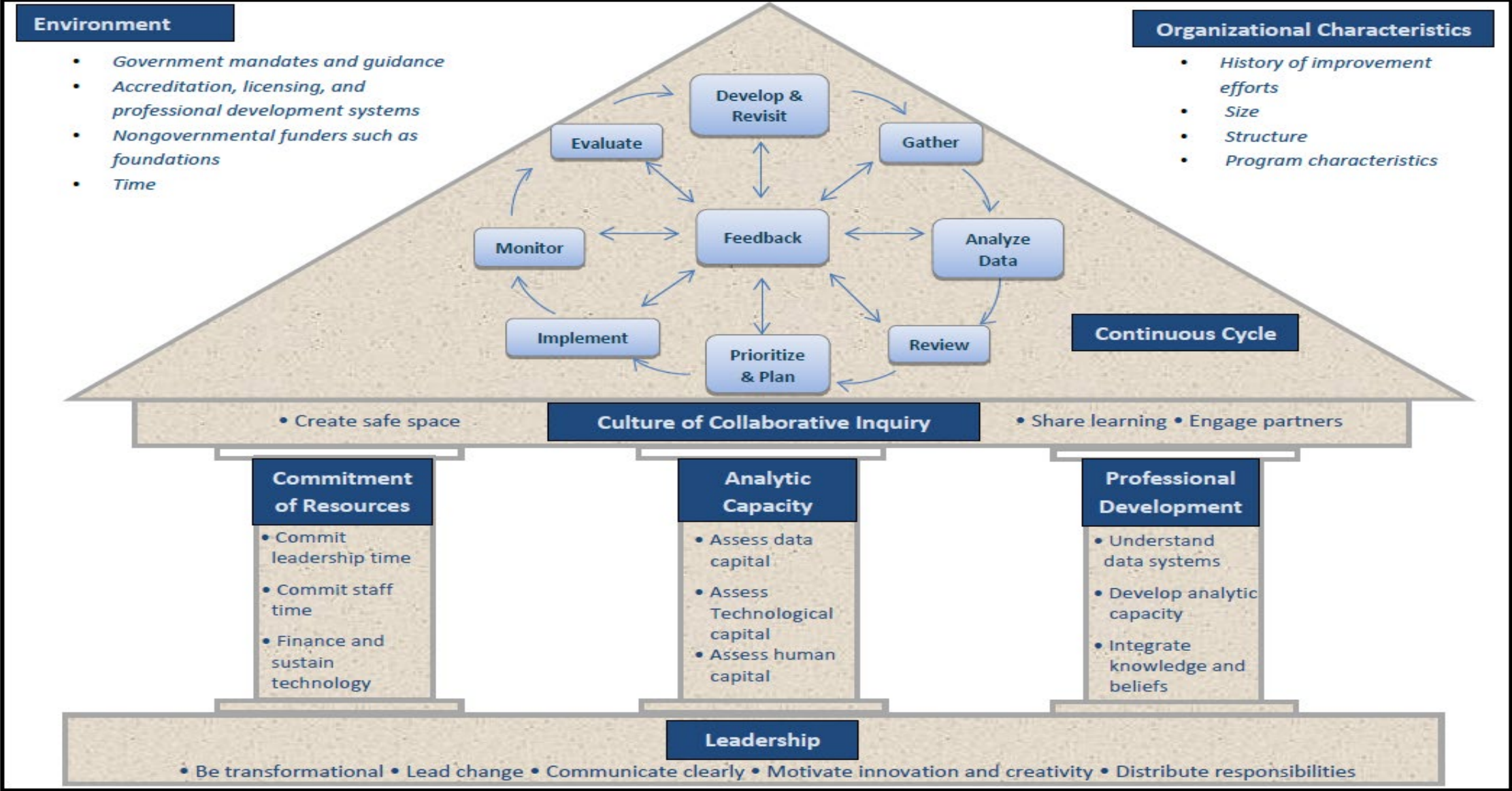
Leah Bartley, PhD, MSW – Research Associate  
Kaye Implementation & Evaluation, LLC

# Continuous Quality Improvement

- CQI is an **ongoing** effort to achieve **measurable improvements** in the efficiency, effectiveness, performance, accountability, outcomes, and other indicators of quality for programs/systems
- Use of **teams** and **data**



# CQI Conceptual Framework



# Implementation Frameworks and CQI

- Implementation frameworks can guide your EBP implementation/CQI and research

## Consolidated Framework for Implementation Research (CFIR) 2.0

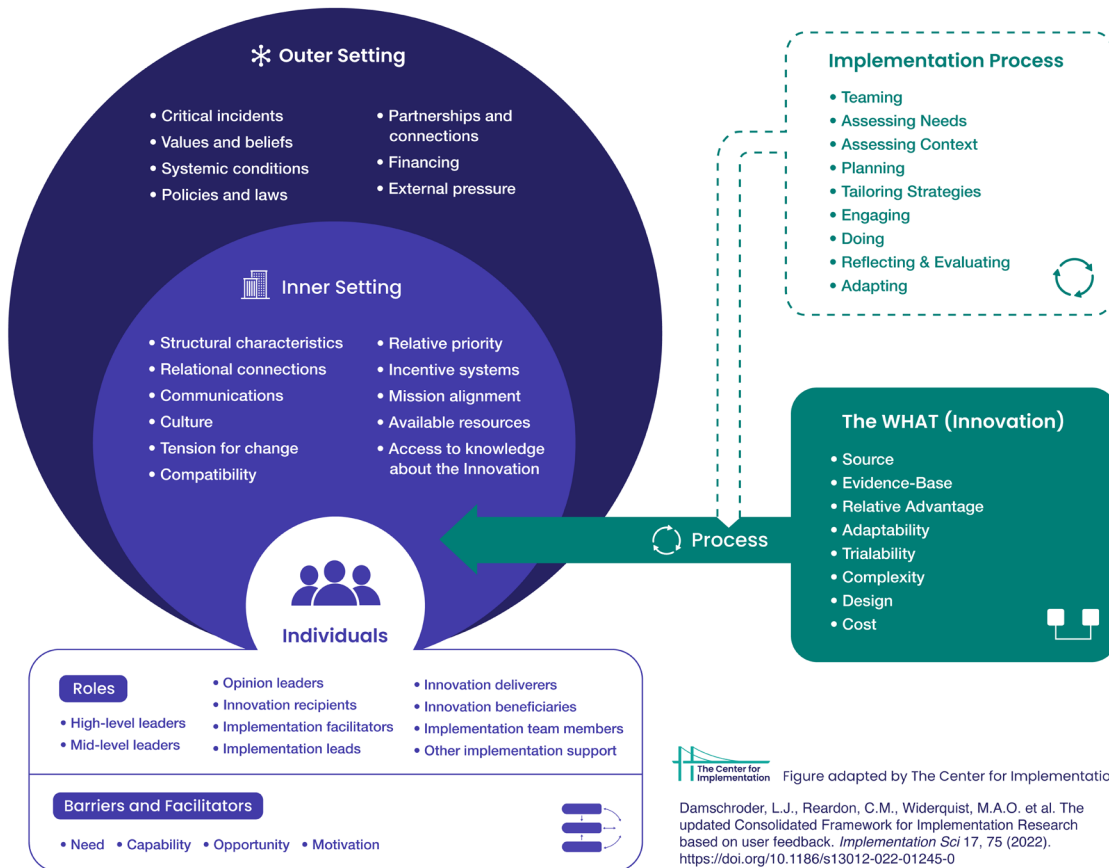
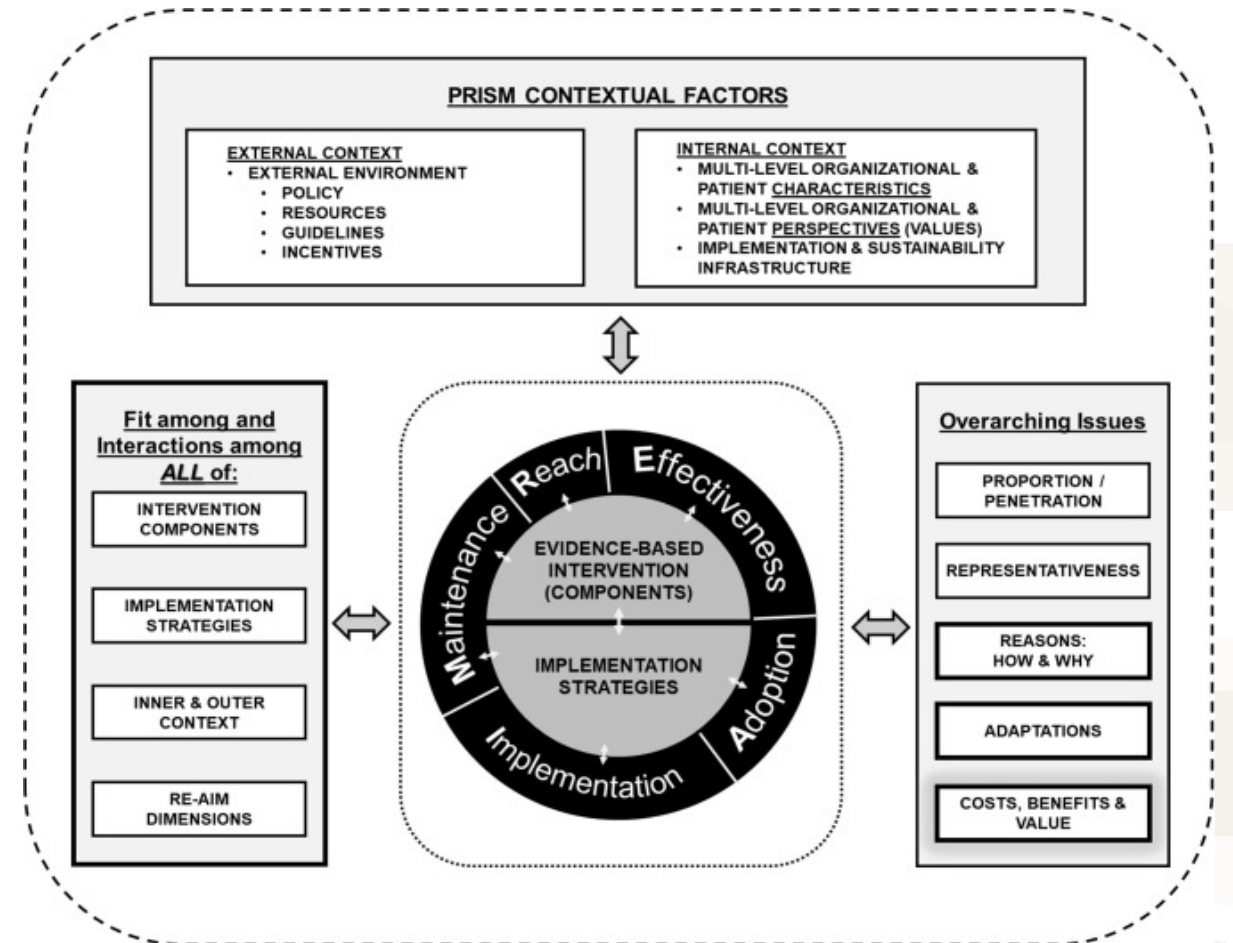


Figure adapted by The Center for Implementation

Damschroder, L.J., Reardon, C.M., Widerquist, M.A.O. et al. The updated Consolidated Framework for Implementation Research based on user feedback. *Implementation Sci* 17, 75 (2022). <https://doi.org/10.1186/s13012-022-01245-0>



PRISM = Pragmatic Robust Implementation and Sustainability Model. Feldstein & Glasgow (2008). *Joint Commission Journal on Quality & Patient Safety*, 34: 228-243.

# Effectiveness of CQI Efforts on Health Care Outcomes (Hill et al., 2020)

28 randomized control trials tested effectiveness of different approaches to CQI compared to non-CQI efforts

- Plan-Do-Study-Act and Model of Improvement were the most common methodologies used for improvement
- Clinical processes measures improved
- Leadership involvement increased impact on outcomes
- Meeting frequency (i.e., weekly) increased impact on outcomes



# CQI Can Promote Equitable Outcomes



Copyright 2016. University of Southern California, Center for Urban Education, Rossier School of Education. *Protocol for assessing equity-mindedness In state policy*





NATIONAL  
COUNCIL  
*for* Mental  
Wellbeing

# Implementation Team's Role in CQI

**CCBHC-E National Training and Technical Assistance Center**

*Funded by Substance Abuse and Mental Health Services Administration and operated by the National Council for Mental Wellbeing*

**UConn**  
SCHOOL OF SOCIAL WORK  
INNOVATIONS INSTITUTE



# Implementation Team Responsibilities in CQI

- Develop, support, and oversee an implementation plan that evolves through the CQI process
- Champion the improvement effort and secure resources based on data emerging from CQI process
- Address implementation barriers and identify opportunities for improvement
- Plan for sustainability
- Use CQI data to monitor progress
- Seek to include and incorporate youth/family perspective on barriers and opportunities for improvement
- Make informed decisions (potentially involving research partner) that support improved outcomes



# Implementation Team Responsibilities in Equity-Focused CQI

- Develop, support, and oversee an implementation plan that evolves through the CQI process and responds to changes in equity objectives
- Champion the improvement effort and secure resources based on data emerging from CQI process, including resources to promote the continual involvement of persons with lived experiences
- Address implementation barriers and identify opportunities for improvement using an equity lens
- Plan for sustainability and sustainable power sharing
- Use CQI data disaggregated by client characteristics to monitor progress
- Commit to meaningfully partnering with youth/family perspective to gain perspective on barriers and opportunities for improvement
- Make informed decisions (potentially involving research partner) that support improved and equitable outcomes

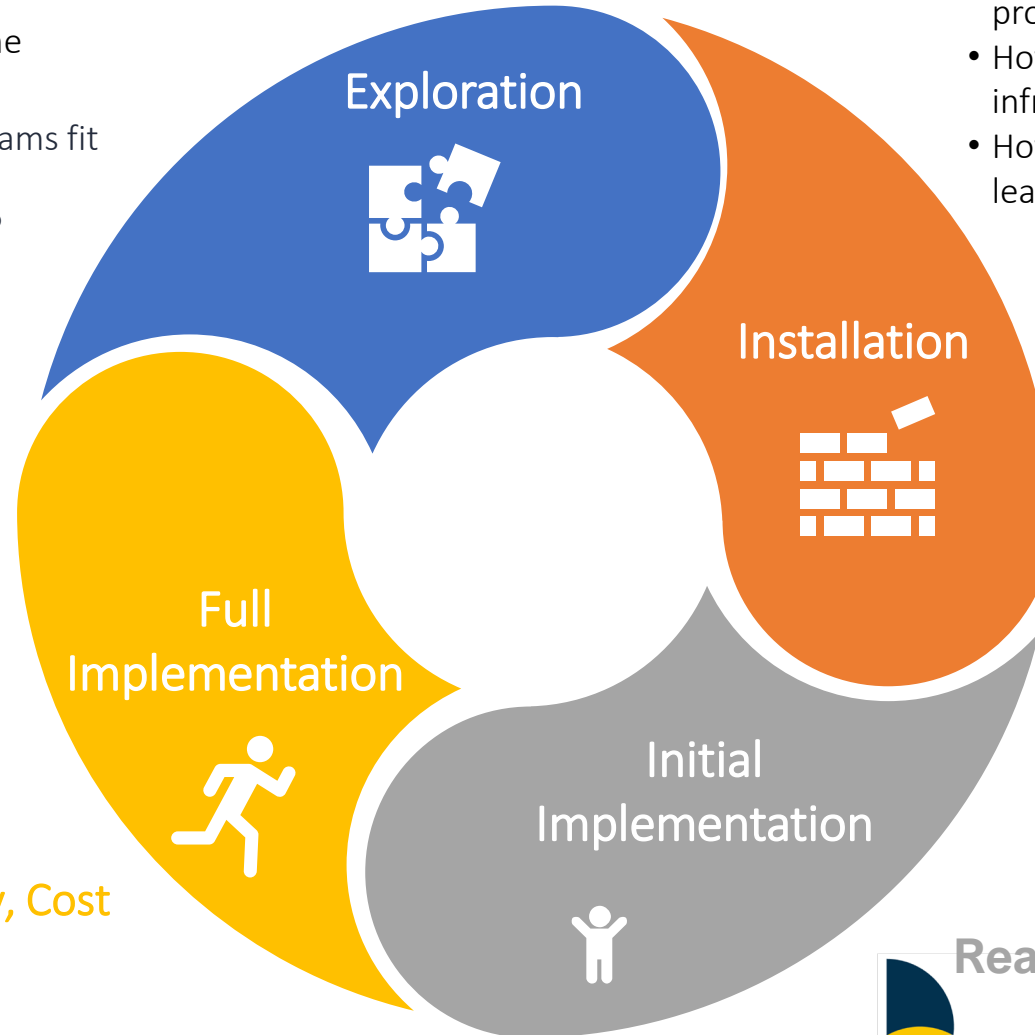
# Implementation Stages

- What are the needs and assets of the individuals and families we serve?
- How do the behavioral health programs fit with the needs and goals?
- Is there buy-in among key partners?

Feasibility, Acceptability, Appropriateness

- Are we experiencing sustained use of the behavioral health programs with most practitioners delivering the models with fidelity and ease?
- Are programs reaching the intended populations?

Reach, Fidelity, Sustainability, Cost



- How can we assess, secure, and develop resources needed to put behavioral health programs into place?
- How can we leverage implementation infrastructure to support implementation?
- How can research partnerships strengthen our learning and improvement processes?

Adoption, Readiness ( $R=MC^2$ )

- How can we support practitioners learning a new behavioral health program or using a familiar program in a new context?
- What data can help us improve supports of behavioral health programs?



NATIONAL  
COUNCIL  
*for* Mental  
Wellbeing

# Developing a CQI Data System

**CCBHC-E National Training and Technical Assistance Center**

*Funded by Substance Abuse and Mental Health Services Administration and operated by the National Council for Mental Wellbeing*

**UConn**  
SCHOOL OF SOCIAL WORK  
INNOVATIONS INSTITUTE



# Overview of Necessary Data Elements



# Fidelity

- "Fidelity assessment is defined as indicators of doing what is intended. This definition requires a) knowing what is intended, and b) having some way of knowing the extent to which a person did what was intended." (NIRN)
- Fidelity is an important measure of effective implementation
- It requires both **adherence** to the model as well as **competence** in program delivery
- Fidelity standards and monitoring reduce the potential for "model drift."

Adherence + Competence = Fidelity



# Methods for Assessing Fidelity

Method	Description
Site visit	Intervention experts conduct structured interviews/observations
Structured observation	Intervention experts code practitioners during live observation, or trained coders rate audio/video recordings
Multi-informant methods	Feedback collected from multiple stakeholders, including youth, families, providers, case files, supervisory review
Self-report checklists	Practitioners complete checklists to describe whether key intervention activities were completed
Secondary data analysis	Researchers analyze existing administrative data
Supervisory review	Supervisors rate practitioners on adherence or competence
Case file review	Intervention experts or trained researchers code case files/progress notes
Key informant survey	An agency representative reports for a unit or organization or a client/family reports on their experience with the program



## Fidelity Measurement as an Implementation Strategy

- Measuring progress toward fidelity concentrates attention on specific professional behavior(s) and quality practice
- Structures feedback for practitioners
- Positive feedback makes practitioners feel good, is reinforcing
- Critical feedback indicates where practitioners need to focus
- Informs implementation activities (e.g., training, coaching, decision support tools)

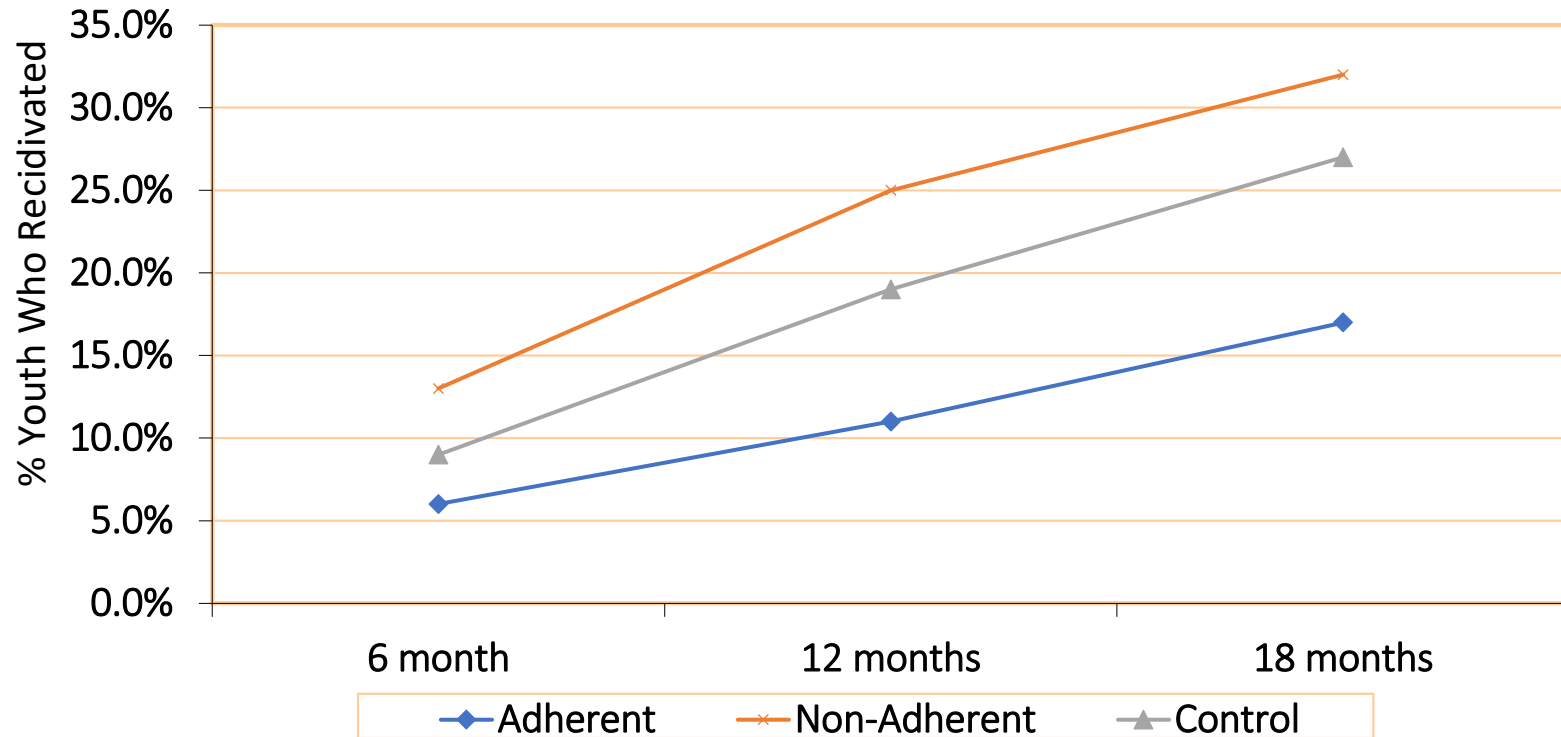
(Kaye & Holder, 2011; Bond et al, 2000; Hohmann & Shear, 2002; Orwin, 2000; Proctor et al., 2011)

## Fidelity Measurement as a Research/Evaluation Strategy

- Manipulation check for the independent variables in intervention research
- Accounts for negative or non-significant findings in experimental group
- Ensures no “leakage” or contamination in control group (Note: We call this “spillover” now)
- Identifies which programmatic components are most effective
- Outcome of interest (dependent variable) in implementation research

# EBP Fidelity is Important for Client Outcomes

## Functional Family Therapy Model Adherence & Clinical Outcomes



With high adherence, significant positive outcomes:

**38% reduction in felony crime**  
**50% reduction in violent crime**

Low adherence led to worse outcomes than control condition

# Steps to Setting Up Your CQI Data System

1. Develop program's logic model
2. Create data dictionary
  - Reviewed by all stakeholders, consensus on definitions
3. Establish data sharing MOUs and consent forms, if needed
4. Establish data collection/extraction process
5. Establish reporting template(s)

# Logic Model

- Logic models provide a visual snapshot of a program
  - Communicates the intended relationships between program goals and outcomes and a theory of change
  - Consider inputs, outputs, and outcomes
  - Can intentionally center equity
- The practical goal is to get everyone on the same page regarding the program, the approach, and what it will take to produce the intended outcomes
  - Key data maps onto program logic model components



# Logic Model for CQI

Updated Date

## Logic Model for [Program X] CQI

<b>Program Description:</b>					
<b>Primary Program Goal(s):</b>					
INPUTS	OUTPUTS		OUTCOMES		
What we invest	What we do (activities)	Who we reach (participation)	Why we did it: short-term (immediate, weeks-months)	Why we did it: intermediate (months-years)	Why we did it: long-term (impact, years-decades)
-	-	-	-	-	-
Data/Measures					
-	-	-	-	-	-
Assumptions			External Factors		
-			-		

# Options for Data Collection

## Electronic health records

**Excel:** worksheet(s)

**Access:** linked worksheets with data entry forms

Regardless of the platform, in order to have actionable data you must think carefully about:

- What you track
- How you track it
- Who is included and who is excluded in the data, and why

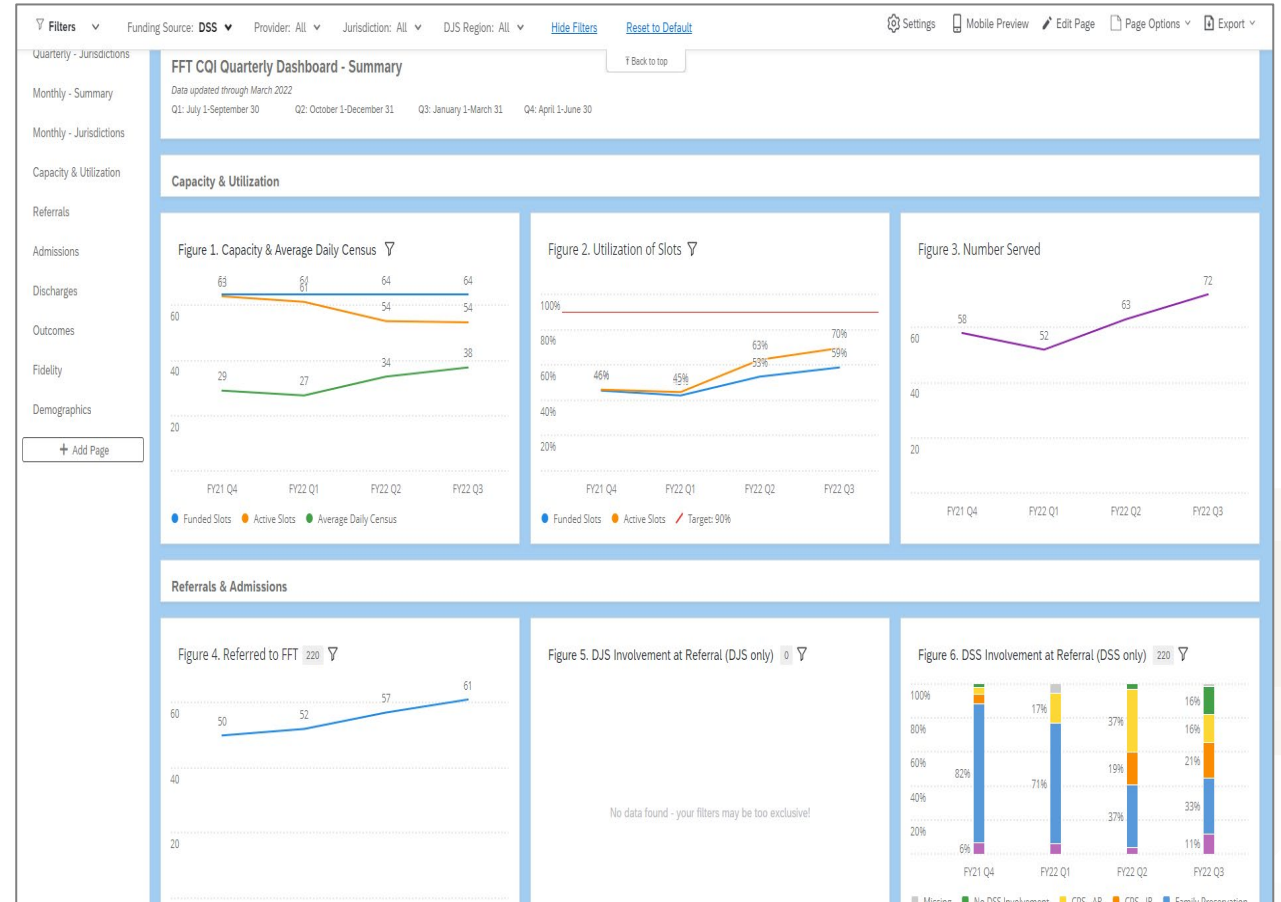
# CQI Data Reporting

- Goal: Summarize data on program capacity/utilization, implementation/fidelity, and outcomes
  - *Are we having the intended reach, program implementation, and impact?*
  - Data should drive the use of strategies to improve implementation (e.g., PDSA process)
- Report design
  - Establish report content and frequency (e.g., weekly, monthly, quarterly)
  - Shows trends over time and important comparisons
  - Include benchmarks determined by the EBP model and/or team
  - **Dashboards are a key tool!**
- Ad hoc analyses to answer implementation team's questions



# Tell a Complete Story

- What other data and information provide context for the numbers?
- How do persons with lived experience interpret the data?
- How do the numbers align with other sources of information documenting client's service experiences?





# Equity Considerations in Prioritizing Data

Figure 22. Resiliency factors by race/ethnicity

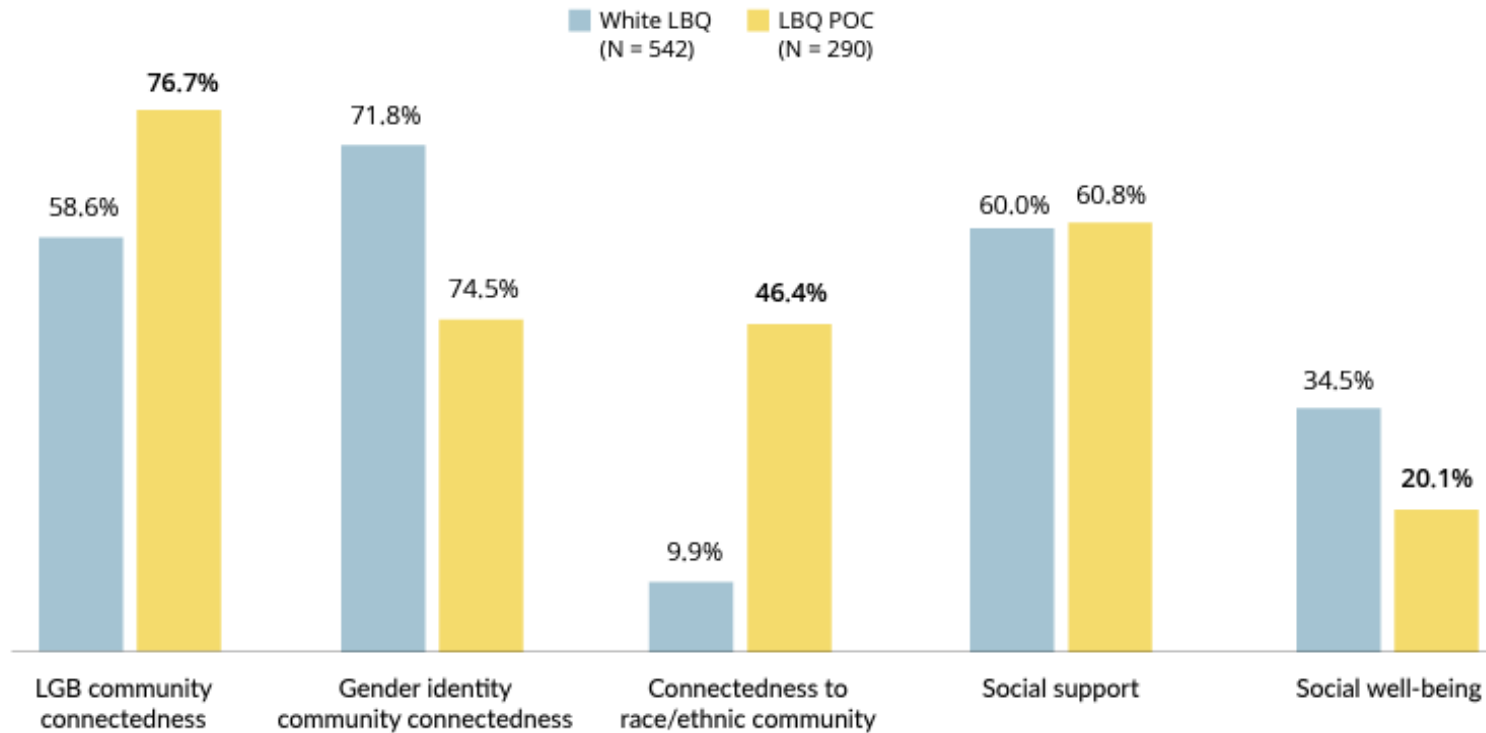


Figure from - Health And Socioeconomic Well-being Of LBQ Women In The US. Wilson et al., 2021. Data Source: Generations Study and TransPop Study data Note: Bold numbers indicate statistically significant differences between that comparison group and White LBQ women.

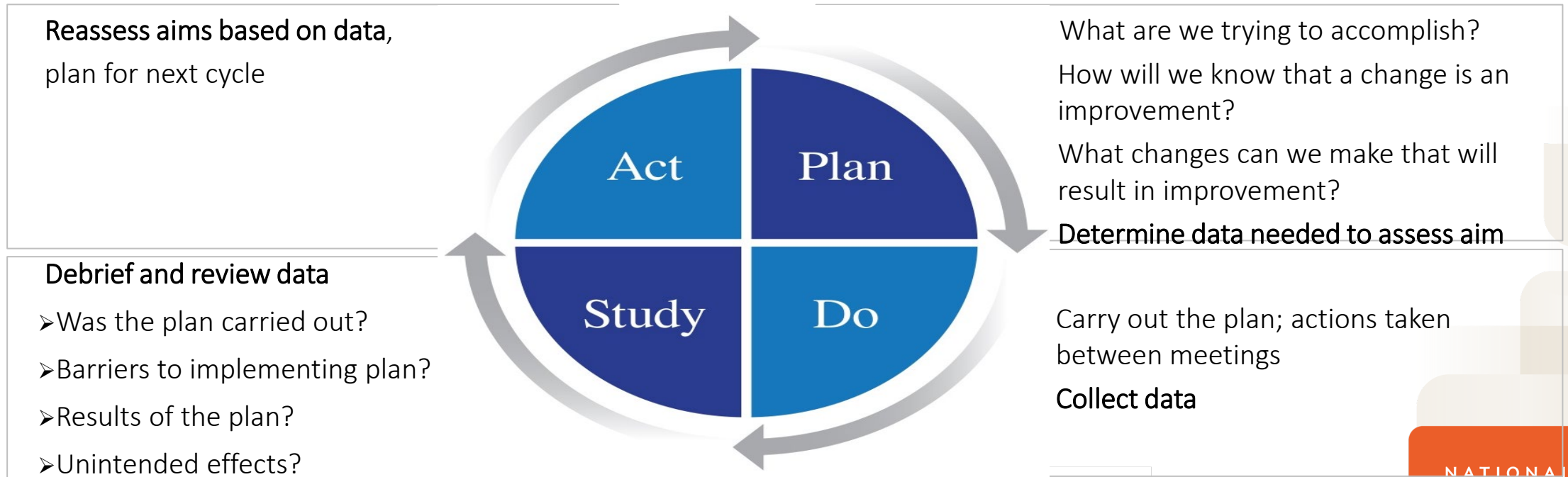
Data should be...

- collected in a culturally competent and humble manner
- describing the breadth of experience amongst the service population
- supporting disaggregated views of outputs and outcomes\*
- measuring equity objectives

*\*Data collection must support disaggregation.*

# Using Data in Your CQI Process

- Data should be regularly used by your Implementation Team as part of the CQI process, guiding the development of improvement plans and celebrating achievements.



# Review: Collaborating with Your Research Partner for Program CQI

- Work with a research partner to identify research questions that will inform/improve your EBP implementation
- Review Implementation Frameworks and agree on using one that aligns with each other's goals
- Engage your research partner as a member of the EBP Implementation Team
- Collaborate with your research partner to develop a program logic model
- Engage research partner to assist with measuring fidelity
- Define the data elements together, ensure common understanding of program language
- Determine how data can/will be collected together
  - If using your EHR, ensure all data can be extracted for the researcher to use for analysis
- Work together to develop a data dashboard/report template



# Review: Collaborating with Your Research Partner for Program CQI

- Work with a research partner to identify research questions that will inform/improve your EBP implementation
- Review Implementation Frameworks and agree on using one that aligns with each other's goals
- Engage your research partner as a member of the EBP Implementation Team
- Collaborate with your research partner to develop a program logic model
- Engage research partner to assist with measuring fidelity
- Define the data elements together, ensure common understanding of program language
- Determine how data can/will be collected together
  - If using your EHR, ensure all data can be extracted for the researcher to use for analysis
- Work together to develop a data dashboard/report template

