



HEALTHY MINDS
STRONG COMMUNITIES

Building Necessary Cross System Partnerships

Child, Youth and Family-focused CCBHC Learning Community

May 28, 2025

CCBHC-E

National Training and Technical Assistance Center

Funded by Substance Abuse and Mental Health Services Administration and operated by the National Council for Mental Wellbeing



CCBHC S-TAC

CCBHC State Technical Assistance Center

UConn

SCHOOL OF SOCIAL WORK

INNOVATIONS INSTITUTE



Acknowledgements and Disclaimers

This presentation was made possible by Grant Number 1H79SM085856 and Contract Number 75S20322D00024/75S20323F42001 from the U.S. Department of Health and Human Services (HHS). Its contents are solely the responsibility of the authors and do not necessarily represent the official views, opinions, or policies of HHS.

*Additionally, the views expressed in this webinar are solely the opinions and views of the people participating. They do not necessarily reflect the opinions or views of the **National Council for Mental Wellbeing**, its employees or partners. We are providing this content for informational purposes only.*

Learning Community: Overview

- Five-month learning community designed to increase access and improve the quality of CCBHC services to meet the needs of children, youth and families.
- Each month, participants will participate in a content webinar, followed by options to participate in cohort-specific office hours on the topics covered, specifically tailored to the needs of clinics and states.
- Learning Community Objectives
 - Understand the value of children's services, the framework and role of child-serving systems and how they align with CCBHC implementation.
 - Identify design and implementation approaches that states and CCBHCs can use to meet the specific needs of children, youth and young adults with behavioral health needs, as well as their families.
 - Explore strategies and examples to support CCBHCs in fulfilling the requirements to serve children and youth.

Learning Community Sessions

Session	Dates/Times
Session 1: Organizational Climate and Culture	March 24, 12-1 p.m. ET <i>State Office Hours: March 24, 1-2 p.m. ET</i> <i>Clinic Office Hours: April 8, 3-4 p.m. ET</i>
Session 2: Service Development for Children and Youth	April 28, 12-1 p.m. ET <i>State Office Hours: April 28, 1-2 p.m. ET</i> <i>Clinic Office Hours: May 13, 3-4 p.m. ET</i>
Session 3: Building Necessary Cross-System Partnerships	May 28, 12-1 p.m. ET <i>State Office Hours: May 28, 1-2 p.m. ET</i> <i>Clinic Office Hours: June 10, 3-4 p.m. ET</i>
Session 4: Integration with MRSS and Crisis Response for Youth Populations	June 23, 12-1 p.m. ET <i>State Office Hours: June 23, 1-2 p.m. ET</i> <i>Clinic Office Hours: July 15, 3-4 p.m. ET</i>
Session 5: Customization for the Lifespan: Serving Early Childhood and Transition-aged Populations	July 28, 12-1 p.m. ET <i>State Office Hours: July 28. 1-2 p.m. ET</i> <i>Clinic Office Hours: Aug. 12, 3-4 p.m. ET</i>

Today's Learning Objectives

By the end of this presentation, participants will be able to:

- Demonstrate the partnerships necessary to support effective services for children and youth
- Explore strategies to establish relationships between CCBHCs and children's systems and build referral and handoff pathways that work
- Recognize system design elements that will affect local and state partnerships between CCBHCs and children's systems including authority and financing mechanisms

Today's Presenters



Sheamekah Williams
President and CEO
Evolution
Foundation



Johanna Bergan
Program Manager
Innovations
Institute
University of
Connecticut



Lisa J. Betz
LCSW, LCPC
Deputy Director Child
and Adolescent
Services
Illinois Department of
Human Services



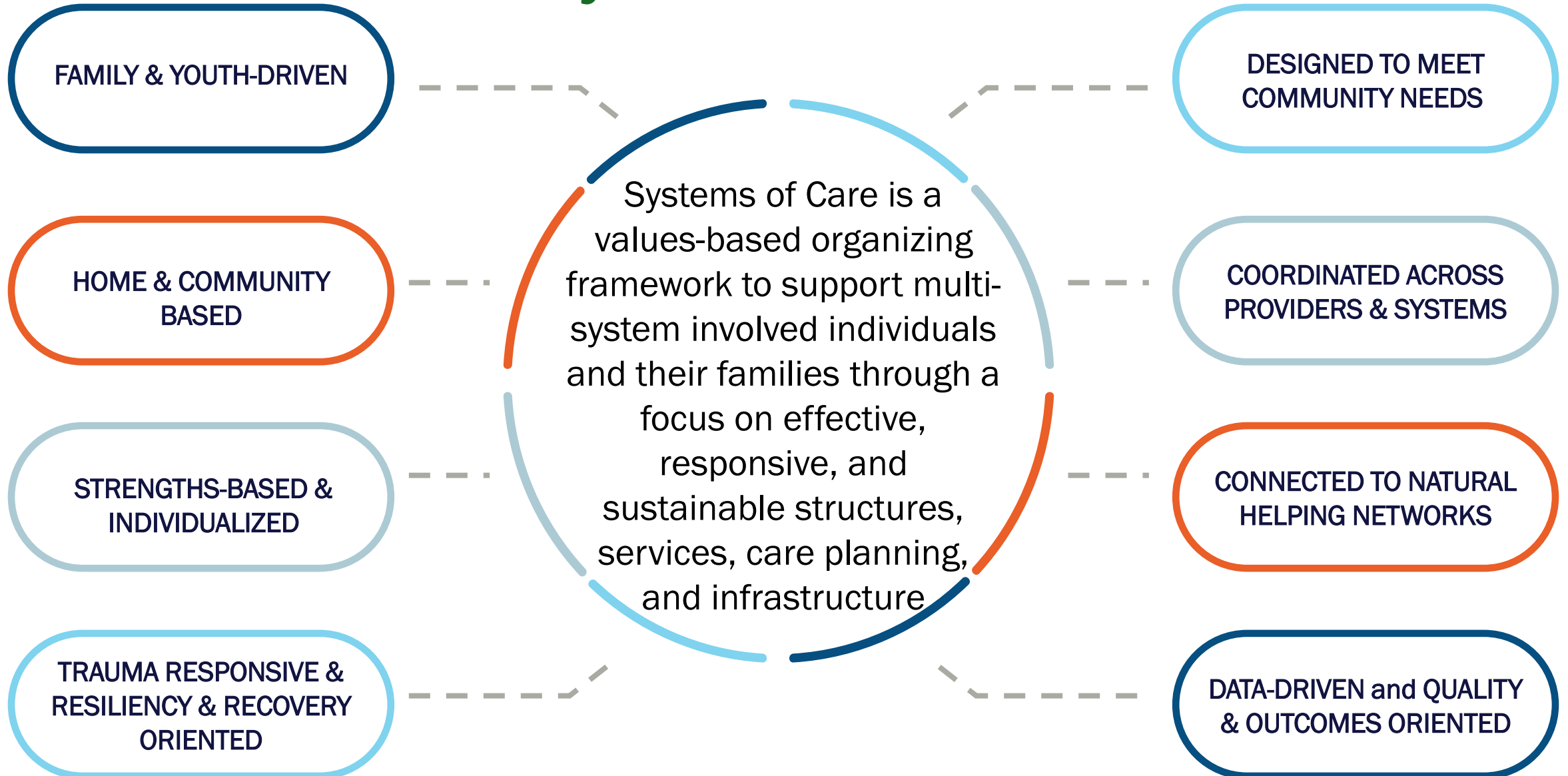
Jamie Martens-Perry
Director of IL
Integrated Youth &
MO Project Access
Chestnut Health
Services



CCBHC Criteria Highlights for CYF

- Community needs assessment **must reflect the needs of children, youth and families**, including receiving **input from youth, their caregivers and local K-12 school systems** in the CCBHC service area.
- If states have **independent screening and assessment processes for certain children and youth populations**, CCBHCs should **establish partnerships** to incorporate findings and avoid duplication of effort.
- Within their service area, CCBHCs **must have partnerships with** schools, child welfare, juvenile justice, Indian Health Service, youth regional treatment centers and foster care agencies.

Systems of Care



Key Considerations in Partnerships

- Effectively serving children, youth, and families demands unique partnerships across all child serving systems
- Children, Youth, and Families are often involved in multiple systems
- Children's Behavioral Health System exists within your jurisdiction already
- CCBHC design and expansion links INTO this system



HEALTHY MINDS
STRONG COMMUNITIES

Illinois State Collaboration

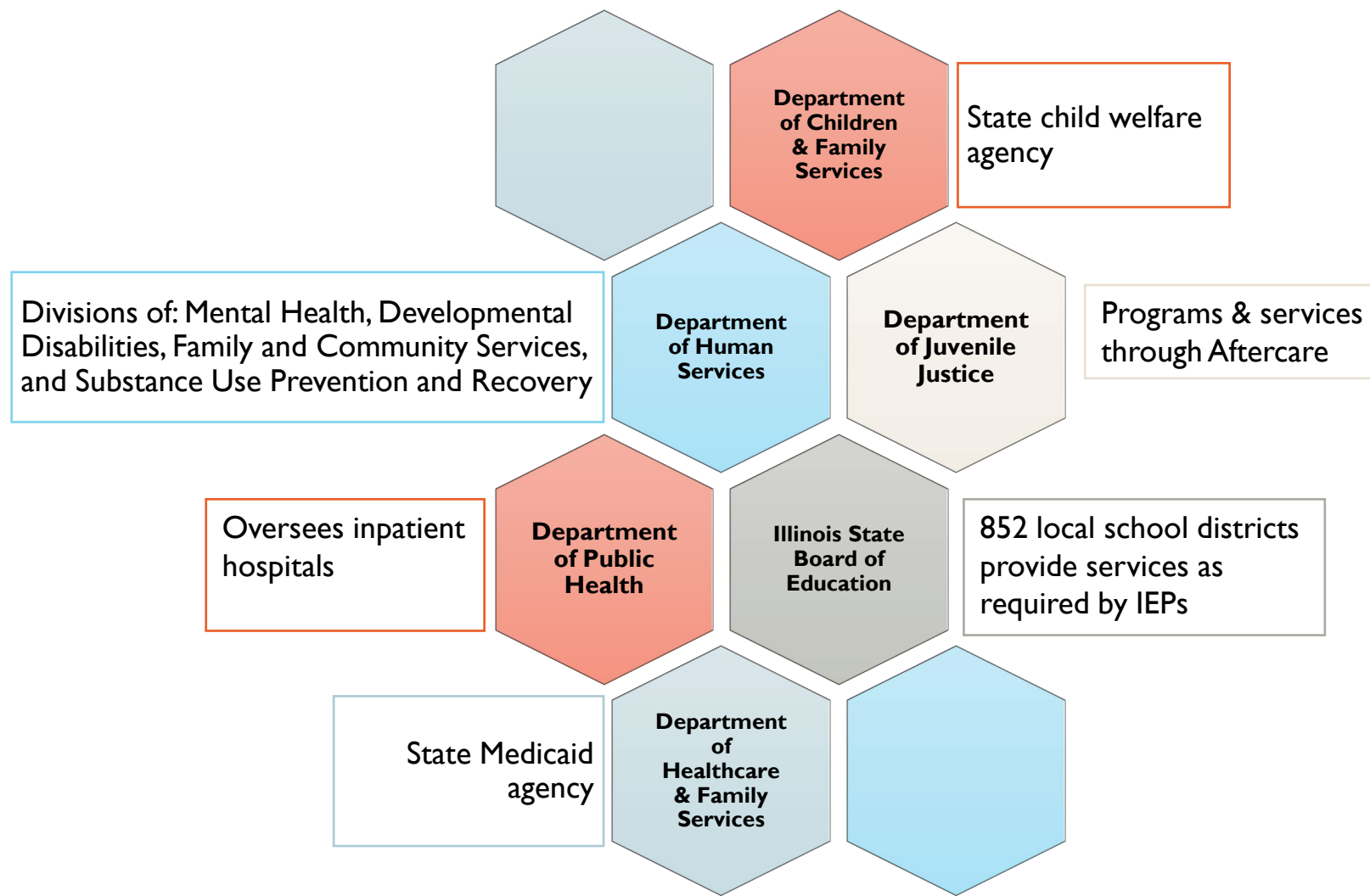
Lisa J. Betz, LCSW, LCPC

*Deputy Director of Child and Adolescent Services, Illinois Department of Human Services,
Division of Mental Health*

Children, Youth
and Families
Need Access to
Services
Regardless of
Funding



Illinois Children's Behavioral Health Care System –Six Child-Serving Agencies



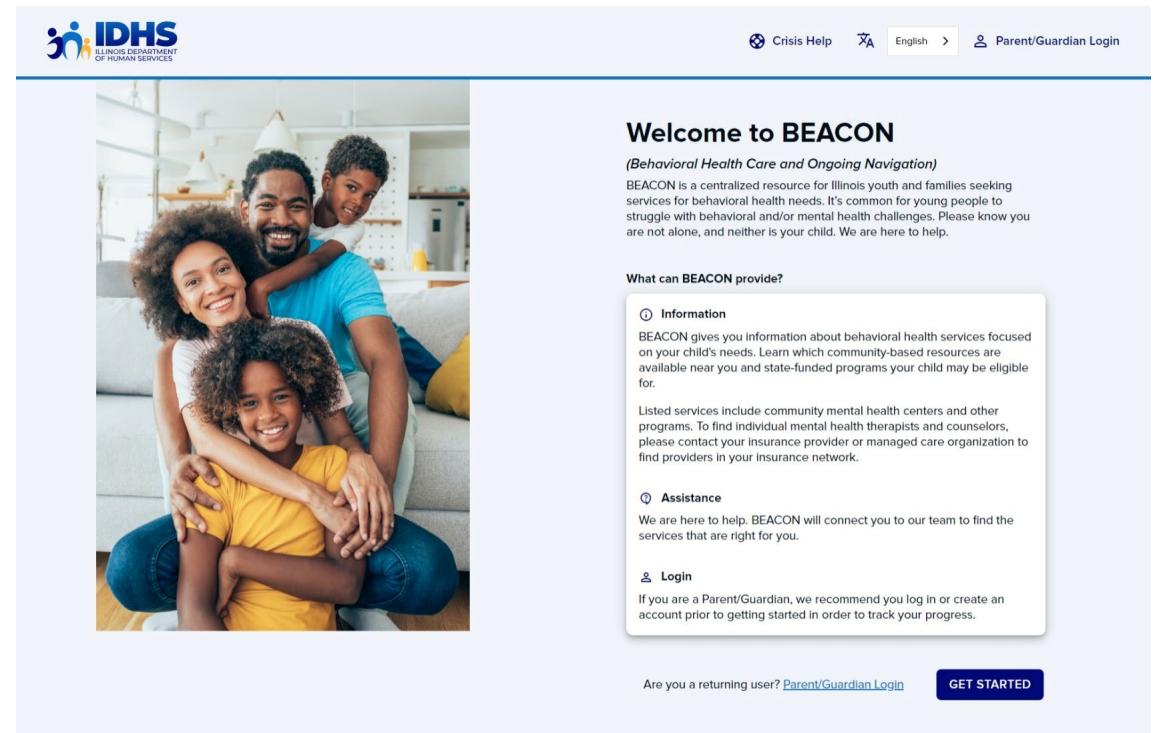
Timeline



Behavioral Health Care and Ongoing Navigation (BEACON)

BEACON was created to:

- Help families easily find and connect to the right services in one simple place.
- Use technology to streamline communication and reduce delays.
- Provide tools for tracking progress and maintaining communication.
- Create a shared platform for agencies to work together seamlessly.



Transformed System



Thank you

Lisa J. Betz, LCSW, LCPC

Deputy Director Child and Adolescent Services

Illinois Department of Human Services, Division of Mental Health

Lisa.J.Betz@illinois.gov

c: 773-304-7171

IDHS: Chief Officer for Children's Behavioral Health







MISSION

Making a difference:
Improving quality of life
through excellence in service.



VISION

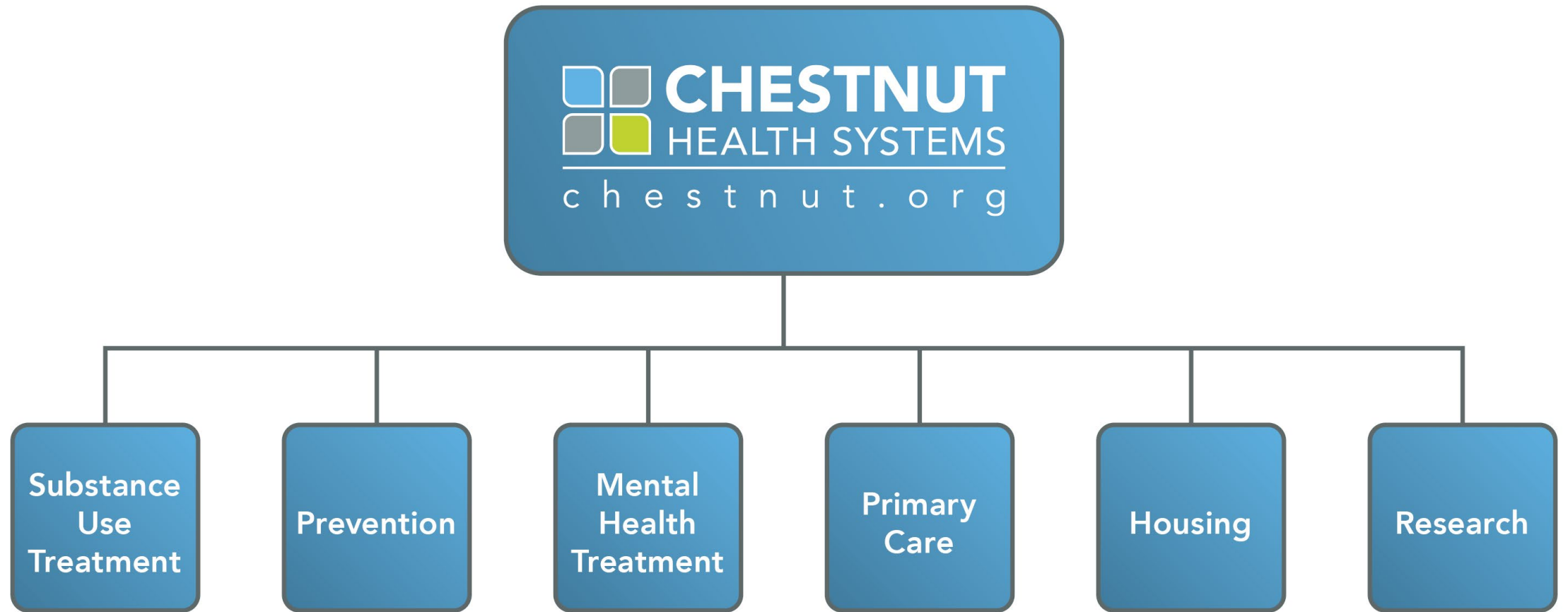
Chestnut Health Systems will
be a leader in the
development and delivery of
superior health and human
services.



VALUES

- Our Clients, Patients, and Employees
- Integrated Care
- Quality and Safety
- Continuous Learning
- Communication and Transparency
- Innovation and Strategic Growth
- Collaboration

Chestnut Service Lines



Chestnut's CCBHC

- CCBHC is an integrated community behavioral health model of care that aims to improve service quality and accessibility.
- Southern Region CCBHC Services
 - Received 2 CCBHC federal grants in 2020 and 2022 from SAMHSA. (2020 – Expansion Grant (2 yrs) and 2022 – Improvement and Advancement (IA) Grant (4 yrs))
 - Granite City and Belleville locations were provisionally accepted into the IL State CCBHC Demonstration Initiative that started on 10/01/24.
- CCBHC Benefits:
 - Ensures integrated, evidence-based, trauma-informed, recovery-oriented and person-and-family-centered care.
 - Our locations offer the full array of CCBHC-required mental health, substance use and primary care screening, assessment, and treatment services.
 - Through CCBHC service implementation we have established collaborative relationships with other providers and health care systems to ensure coordination of care for our clients.



Collaboration is KEY



Purpose For Youth AND Families

- Intersect in many other systems where youth typically are
 - Schools**
 - Juvenile Justice
 - State DCFS/POS agencies
 - Other service agencies
 - Summer Camp Providers
 - Day Cares
- It just makes sense to create a System of Care



Partnership Strategies

- Identify Mutual Goals (Understand their Mission)
- Research and Utilize Data
- Connect and Build Relationships
- Propose the Collaboration
- Formalize Partnership
- Evaluate and Make Changes
- Celebrate and Share Successes



What Role does Chestnut Health Systems Play?

- Create System of Care with other Child Serving Systems
 - Leadership Team/Wellness Champions
 - Make sure parent/peer voice are present
- Utilize MOUs to Embed Staff Where Youth Are
 - 40 staff in over 100 Schools in IL in 3 Counties
 - 2 Detention Center Staff
 - 5 Juvenile Justice Community Based Staff
- Learn about ALL community resources and work together often



Questions & Discussion



Upcoming Office Hours

- State Office Hours: June 23, 1-2 p.m. ET
- Clinic Office Hours: July 15, 3-4 p.m. ET

Learning Community Resources

- Webinar and Office Hour Schedule
- Learning Community Recordings and Slides
- Topical Resources
- Registration and Meeting Links

<https://www.thenationalcouncil.org/child-youth-and-family-ccbhc/>

NATIONAL
COUNCIL
for Mental
Wellbeing

HEALTHY MINDS
STRONG COMMUNITIES